

Online Appendix
“Illegal Immigration, State Law, and Deterrence”
Mark Hoekstra
Sandra Orozco Aleman

Table A1: Comparison of Migrants Surveyed by the Migration to the Northern Border (EMIF) and the American Community Survey (ACS)

Migrants to the United States - EMIF 2009-2010		Recently arrived non-citizen Mexican migrants - ACS 2009-2010	
Variable	Mean (Std. Dev.)	Variable	Mean (Std. Dev.)
Age	29.5 (10.7)	Age	35.0 (15.3)
Years of schooling	7.3 (3.2)	Years of schooling	9.3 (4.4)
Women	0.10	Women	0.35
Married	0.58	Married	0.43
Speaks English	0.09	Speaks English	0.50
State of destination in the U.S.		State of residence in the U.S.	
California	0.26	California	0.24
Arizona	0.13	Arizona	0.06
Florida	0.06	Florida	0.02
Texas	0.05	Texas	0.23
New York	0.03	New York	0.02
Illinois	0.02	Illinois	0.04
Colorado	0.02	Colorado	0.04
Georgia	0.02	Georgia	0.02
North Carolina	0.02	North Carolina	0.03
Observations	16,122	Observations	1,285

The EMIF sample includes all individuals surveyed who were migrating from Mexico to the US with the intent of crossing the border and entering the US within 30 days. The ACS sample includes surveyed individuals who migrated to the US during the year of the survey.

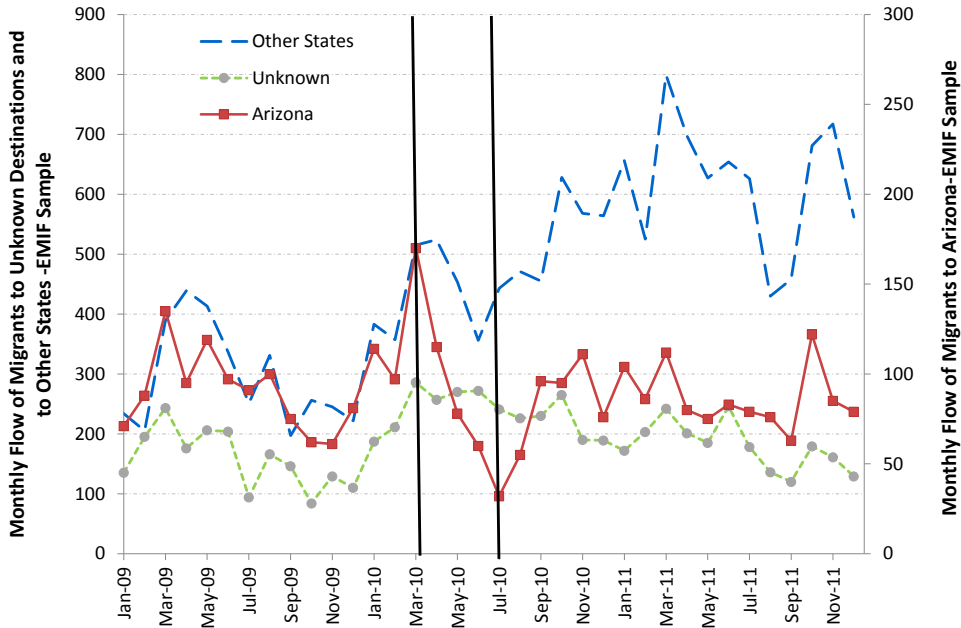


Figure A1a: Monthly Flow of Workers Migrating from Mexico to Arizona and Other States, January 2009 – December 2011 (EMIF)

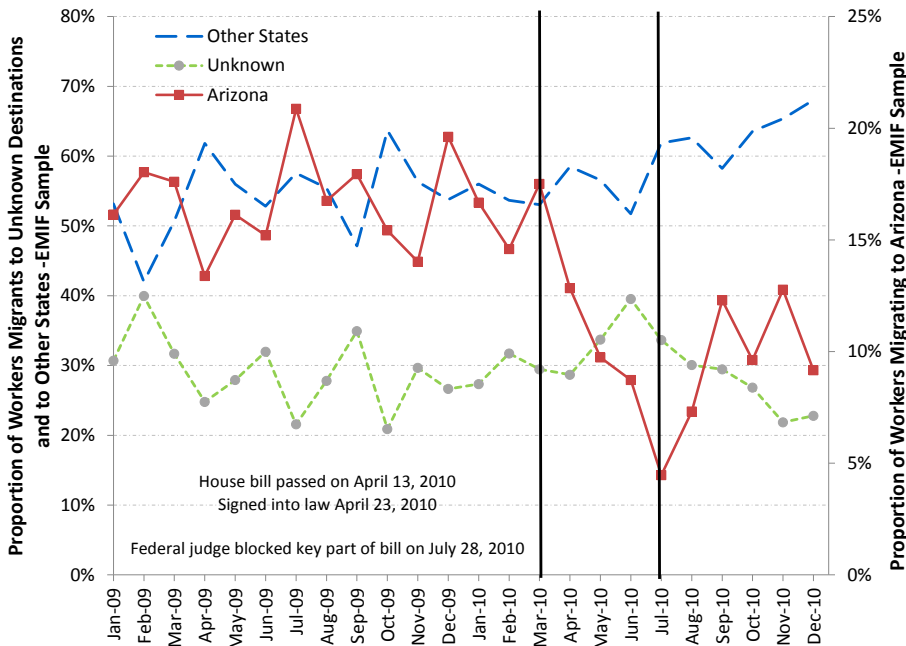


Figure A1b: Proportion of Workers Migrating from Mexico to Arizona, January 2009 – December 2011 (EMIF)

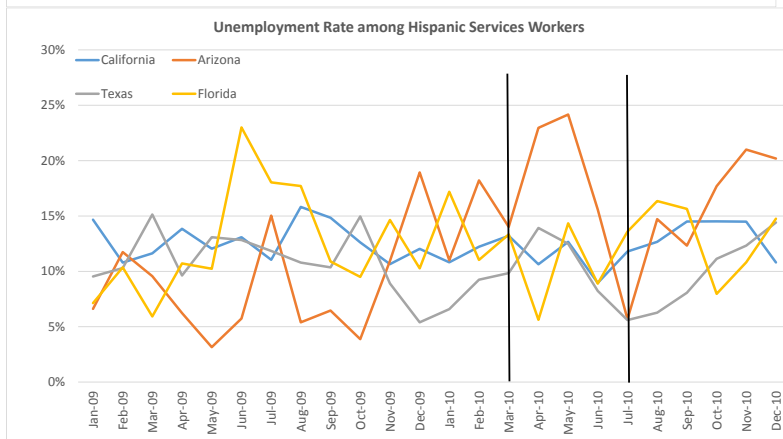
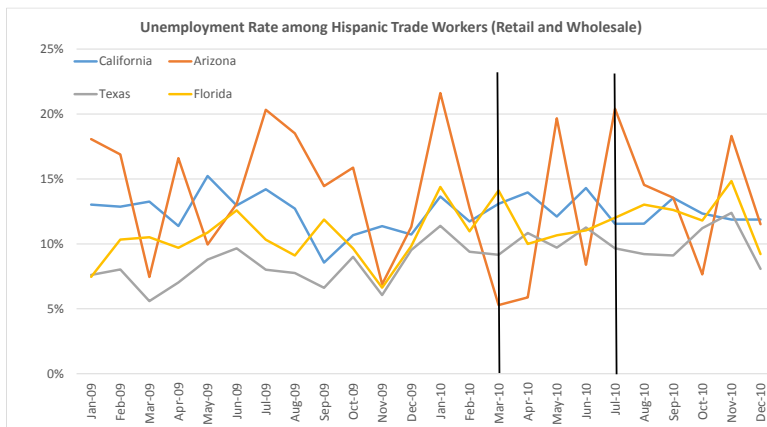
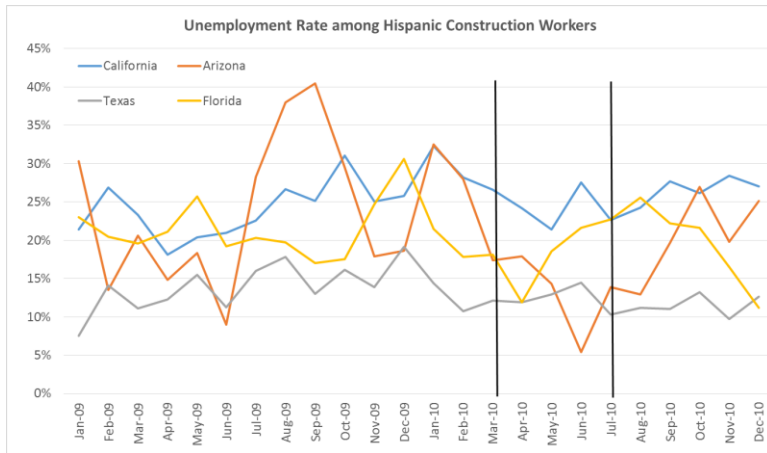


Figure A2: Unemployment rates of Hispanics working in construction, trade, and services in Arizona, California, Florida, and Texas

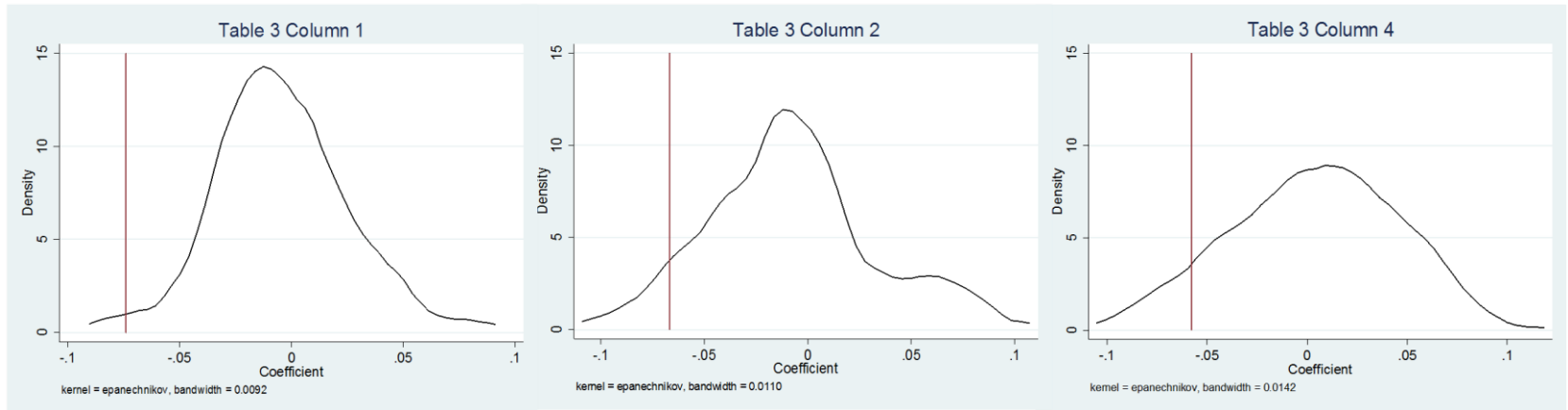


Figure A3a: The Distribution of Placebo Estimates of the Average Effect of SB 1070 Corresponding to Specifications from Panel A in Table 3

Notes: The fraction of placebo estimates lying to the left of the actual estimate shown in Panel A of Table 3 is 0.0168, 0.0672, and 0.0840 for columns 1, 2, and 4, respectively. The average placebo estimates are 0.0044, -0.0078, and -0.0036, respectively.

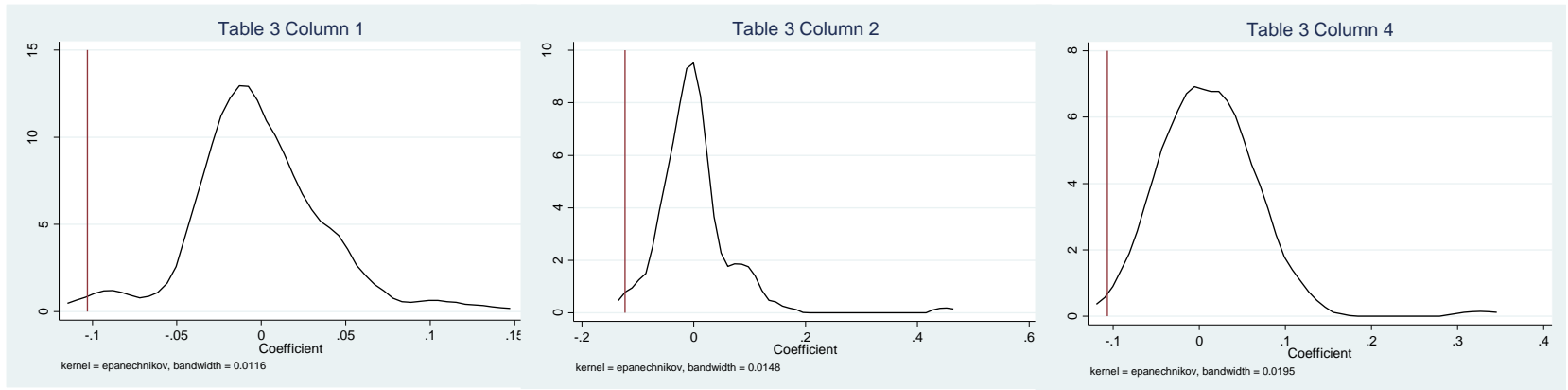


Figure A3b: The Distribution of Placebo Estimates of the Effect as of July 27, 2010 Corresponding to Specifications from Panel B in Table 3

Notes: The fraction of placebo estimates lying to the left of the actual estimate shown in Panel B of Table 3 is 0.0084, 0.0000, and 0.0000 for columns 1, 2, and 4, respectively. The average placebo estimates are -0.0012, 0.0010, and 0.0112, respectively.

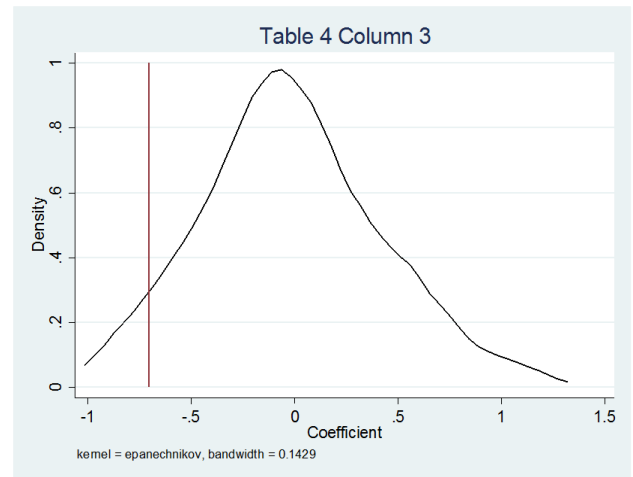
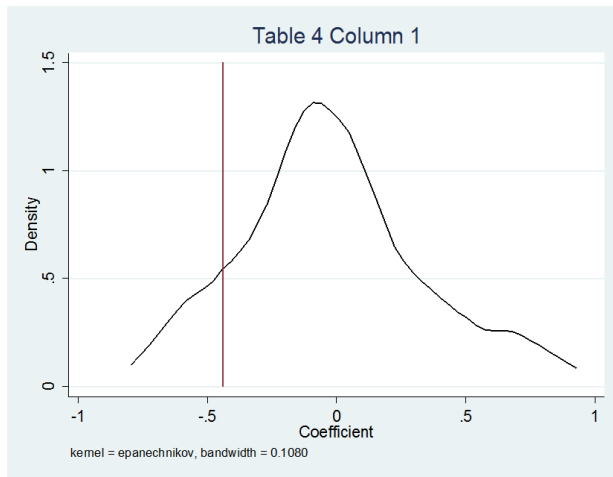


Figure A4: The Distribution of Placebo Estimates Corresponding to Specifications from Table 4

Notes: The fraction of placebo estimates lying to the left of the actual estimate shown in columns 1 and 3 of Table 4 is 0.1176 and 0.0336, respectively. The average placebo estimates are -0.0185 and -0.0076, respectively.

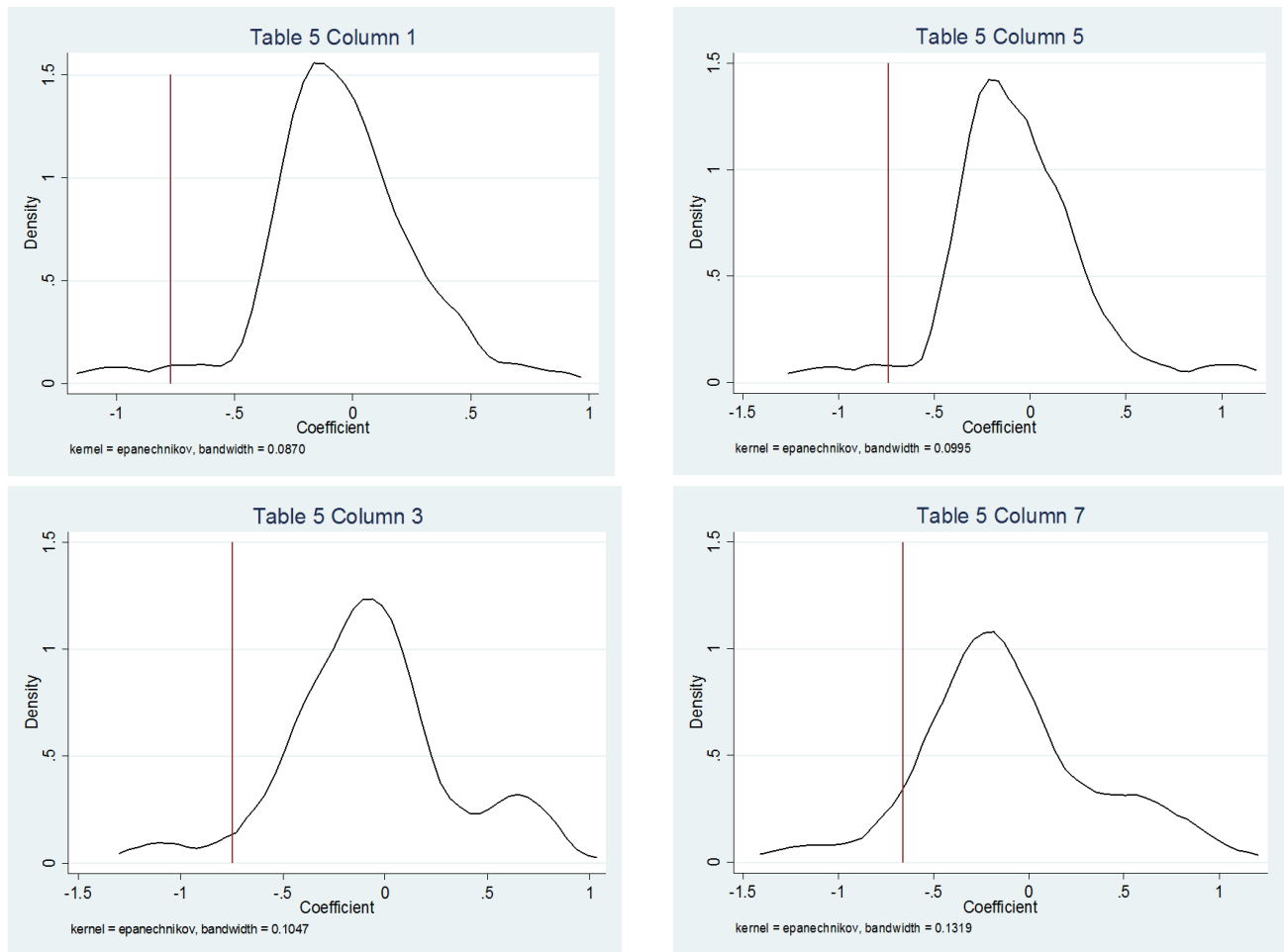


Figure A5: The Distribution of Placebo Estimates Corresponding to Specifications from Table 5

Notes: The fraction of placebo estimates lying to the left of the actual estimate shown in Table 5 is 0.0336, 0.0420, 0.0336, and 0.0756, for columns 1, 3, 5, and 7, respectively. The averages of the placebo estimates are -0.0492, -0.0732, -0.0651, and -0.0982, respectively.