

CoMargin

Jorge A. Cruz Lopez*
Christophe Hurlin

Jeffrey H. Harris
Christophe Pérignon

First draft: October 13, 2011

This draft: October 13, 2014

Abstract: We present CoMargin, a new methodology to estimate collateral requirements in derivatives central counterparties (CCPs). CoMargin depends on both the tail risk of a given market participant and its interdependence with other participants. Our approach internalizes trading externalities and enhances the stability of CCPs, thus, reducing systemic risk concerns. We assess our methodology using proprietary data from the Canadian Derivatives Clearing Corporation that include daily observations of the actual trading positions of all of its members from 2003 to 2011. We show that CoMargin outperforms existing margining systems by stabilizing the probability and minimizing the shortfall of simultaneous margin-exceeding losses.

JEL Classification: G13

Keywords: Collateral, Central Counterparties (CCPs), Derivatives Markets, Extreme Dependence

* Cruz Lopez is at the Bank of Canada, Harris is at the American University Washington D.C., Hurlin is at the University of Orléans, France, and Pérignon is at HEC Paris, France. Emails: jacruzlopez@bankofcanada.ca; jharris@american.edu; christophe.hurlin@univ-orleans.fr; perignon@hec.fr. We thank the Canadian Derivatives Clearing Corporation (CDCC) for providing us with the data used in this paper. We are very grateful to the Chair ACPR/Risk Foundation: Regulation and Systemic Risk, the Dauphine-Amundi Chair in Asset Management, and the Montreal Institute of Structured Products and Derivatives (Institut de la Finance Structurée et des Instruments Dérivés de Montréal) for funding and supporting our research. We appreciate the time and support provided by Scott Hendry, Jonathan Witmer, Nikil Chande and Nicholas Labelle St-Pierre. We thank Andrew Barton, Mark Chambers, Stéphane Crepey, Pierre Collin-Dufresne, Darrel Duffie, Christian Gouriéroux, Nicholas Linder, Anthony Lynch, Anne Wetherilt, seminar participants at the Bank of England, Bank of Japan, Banque de France, French Prudential Supervisory and Resolution Authority (ACPR), Global Risk Institute, and the Reserve Bank of Australia, as well as to the participants of the 2013 Annual Workshop of the Dauphine-Amundi Chair in Asset Management, 2014 IFSID Conference on Derivatives, 2014 SOFIE Conference on Systemic Risk, Bank of Canada Financial Intermediation and Market Dynamics Workshop, the 24th Australasian Finance and Banking Conference, and the QUT-Princeton Frontiers in Financial Econometrics Workshop for their valuable comments.

1. Introduction

In an effort to enhance market stability after the recent financial crisis, G20 member countries mandated the central clearing of standardized derivatives (US Department of Treasury, 2009; European Union, 2012). As a consequence, a growing fraction of the \$700 trillion derivatives market, in notional terms (BIS, 2014), is now being channeled through central counterparties (CCPs). The resulting concentration of default risk in CCPs has increased their systemic importance (Acharya et al., 2009; Pirrong, 2011; Duffie, Li, and Lubke, 2010; Duffie, 2013a; Menkveld, 2013), making it necessary for regulators and market participants to assess and potentially re-evaluate the risk management practices of these institutions.¹

Precautionary measures used to protect CCPs against default include margin (collateral) requirements, minimum capital levels, and contributions to risk mutualization arrangements, such as a default fund. In addition, CCP members are required to segregate their firm (i.e., proprietary) and client accounts (Jordan and Morgan, 1990), and enter into private insurance agreements (Jones and Pérignon, 2013). Of all of these safeguards, however, margin requirements are the most widely used and arguably the most important and effective.²

In this paper, we propose a new margining methodology, called CoMargin, which accounts for the variability and interdependence of the profits and losses (P&Ls) of clearing members. Indeed, other margining systems commonly used in CCPs, such as the Standard Portfolio Analysis of Risk (SPAN) or the Value-at-Risk (VaR) approach, estimate collateral requirements based on a coverage level of potential losses for an individual contract or portfolio of contracts (Figlewski 1984; Kupiec 1994; Booth et al., 1997; Cotter, 2001; Day and Lewis, 2004; Chicago Mercantile Exchange (CME), 2012). However, by focusing only on individual exposures, these alternative systems ignore the fact that

¹ In a derivatives exchange, the clearing house confirms, matches, and settles all trades. Clearing houses operate with a small number of clearing members who are allowed to submit proprietary and client trades for clearing. The process of novation allows the clearing house to become the sole counterparty to every trade cleared by its members (Bliss and Steigerwald, 2006; Pirrong, 2011). Thus, the clearing house concentrates credit risk but remains market risk neutral by matching/netting long and short positions.

² Acworth (2007) shows that the ratio between aggregate margins and total default protection (i.e., margin + default fund + default insurance + other guarantees) is 88.7% for the Chicago Mercantile Exchange (CME), 95.1% for Eurex, and 96.3% for the Options Clearing Corporation (OCC). Margins in CCPs primarily consist of Treasuries (>90%) and other high-quality liquid assets. Cash accounts for less than 1% of all collected margin.

the P&Ls of clearing members are often highly interdependent, and can leave the CCP exposed to simultaneous extreme losses.

To highlight the importance of P&L interdependence, consider the role of collateral in a CCP.

Margin requirements are designed to protect the CCP against losses in clearing member portfolios.

However, there are times when these losses exceed the value of pledged collateral, resulting in negative margin account balances. Clearing members facing these margin “exceedances” may delay payment or even default on their obligations; thus, generating a shortfall in the market and forcing the CCP to compensate all winning counterparties using the default fund.³ Usually, financing the shortfall of a single clearing member over a short period does not impose a hefty financial burden on the CCP; nevertheless, it can still affect market liquidity, particularly during volatile periods. On the other hand, when two or more large clearing members experience simultaneous exceedances due to their P&L interdependence, the resources of the CCP could be eroded to the point of financial distress or even failure. While rare, CCP failures have occurred in the past and proven to be economically significant. Examples include Paris in 1973, Kuala Lumpur in 1983 and Hong Kong in 1987 (Bernanke, 1990; Knott and Mills, 2002; Duffie, 2013b).⁴

P&L interdependence increases (1) with trade crowdedness and (2) underlying asset comovement.

Trade crowdedness occurs when clearing members hold similar portfolio positions (i.e., portfolio weights). Hirshleifer, Subrahmanyam and Titman (1994) argue that this situation arises among large market participants with common informational advantages that lead them to pursue similar directional trades, arbitrage opportunities and hedging strategies.⁵ Underlying asset comovement, on the other hand, occurs when asset returns move in the same direction. This is a common phenomenon during economic slowdowns or periods of high volatility.⁶

³ The typical default waterfall system in a CCP works as follows: (1) if firm i incurs losses that it cannot cover within a predefined period, then the CCP liquidates the assets in its margin account to cover these losses. (2) If the proceeds are insufficient, the CCP liquidates firm i 's contribution to the default fund. (3) Remaining losses are then mutualized by liquidating other firms' contributions to the default fund. (4) If unfunded losses remain, they can be covered with CCP equity or (5) calls for capped or uncapped clearing member contributions to previously unfunded default facilities (see Duffie, Li and Lubke, 2010, and Ghamami, 2014).

⁴ Default of clearing members is of course more frequent. Recent examples in the CME include Refco in 2005, Lehman in 2008, and MF Global in 2011 (see Jones and Pérignon, 2013).

⁵ Much of the proprietary trading activity in derivatives exchanges consists of arbitraging futures and OTC or cash markets (e.g. cash-futures arbitrage of the S&P 500 index, eurodollar-interest rate swap arbitrage, etc.).

⁶ Menkveld (2014) proposes a factor-based measure of trade crowdedness. By construction, however, his measure bundles both components of loss dependence and cannot differentiate between the portion that arises from similar portfolio positions and that

The fundamental goal of this paper is to formally incorporate P&L interdependence in the calculation of margin requirements. By doing so, we contribute to a global effort to design macro-prudential regulations for systemically important institutions and market infrastructures. To the best of our knowledge, our work is the first margining methodology that explicitly incorporates the regulatory objectives defined in the Principles of Financial Market Infrastructures (CPSS-IOSCO, 2012), which state that a CCP should maintain “financial resources sufficient to cover a wide range of potential stress scenarios that should include, but not be limited to, the default of the two participants and their affiliates that would potentially cause the largest aggregate credit exposure to the CCP”.⁷

We define CoMargin as the P&L VaR of a clearing member’s portfolio, *conditional* on one or several other members being in financial distress. In our context, a clearing member is said to be in financial distress if its losses exceeds the VaR of its P&L distribution. We show that this intuitive correction to existing margining systems is sufficient to capture the interdependence of clearing members’ P&Ls. Our proposed margin requirements exhibit a wide range of desirable features. These include systematically increasing with P&L dependence, stabilizing the probability of exceedance events given financial distress, and reducing the probability that the clearing house might exhaust its funds due to large or sudden shortfalls.

Despite its conditional and multivariate nature, CoMargin is simple to estimate. The process starts by taking the trading positions of all clearing members at the end of the trading day as given. Then, in the spirit of stress testing, a series of one-day-ahead scenarios, based on projected changes in the price and volatility of the underlying assets, are used to estimate hypothetical P&Ls; that is,

which arises from increasing asset comovement. Differentiating between these two sources is critical for regulatory and risk management purposes, as the first can be linked to individual trading decisions and the second to aggregate market conditions. The importance of asset comovement has been identified in previous studies. For example, Gemmill (1994) highlights the diversification benefit clearing houses obtain from combining contracts on uncorrelated or weakly correlated assets. Extreme dependence and contagion are discussed in Longin and Solnik (2001), Bae, Karolyi and Stulz (2003), Longstaff (2004), Poon, Rockinger and Tawn (2004), Boyson, Stahel and Stulz (2010), Harris and Stahel (2011), and Christoffersen et al. (2012) among others. Billio et al. (2012) connect extreme financial equity comovements with systemic risk.

⁷ These principles have been widely advocated and are in the process of being adopted by G20 member countries. For instance, Mark Carney, Governor of the Bank of England, recently stated that “It is extremely important that CCPs organize themselves to make sure they can provide the necessary resilience plan ... [to] cover the failure of one or two major institutions” (Risk Magazine, November 28, 2013).

potential changes in the value of members' portfolios. Using these hypothetical P&Ls we compute margin requirements that target a pre-specified probability of margin exceedances conditional on the financial distress of other members.⁸

Through Monte Carlo simulations, we show that CoMargin indeed enhances the stability of the CCP by adjusting collateral allocations such that the probability of margin exceedances, conditional on the financial distress of other firms, remains constant. Our simulations also show that, relative to other methods, CoMargin improves the resilience of the CCP by minimizing the average shortfall when simultaneous exceedances occur. Most importantly, these stability and resiliency properties are robust to a variety of distributional assumptions.

In addition to simulations, we use proprietary data from the Canadian Derivatives Clearing Corporation (CDCC), the CCP of the TMX Montreal Exchange, to empirically assess the performance of CoMargin relative to existing margining systems. Our dataset, the first one of its kind to be used in an academic study, includes daily observations of the actual trading positions of all forty-eight CDCC members from 2003 to 2011. Each member holds a firm, client, and omnibus account with the CDCC. At the end of each trading day, we observe the number of long and short positions held in each account in the most actively traded derivatives contracts in the TMX Montreal Exchange; namely, the three-month Canadian Bankers' Acceptance Futures, the ten-year Government of Canada Bond Futures, and the S&P/TSX 60 Index Standard Futures. The results show that CoMargin leads to fewer exceedances and lower expected shortfalls than SPAN and VaR margins. CoMargin also leads to exceedances that affect smaller clearing members and that are less clustered through time. The relative performance of our method improves when an exceedance event occurs and, more importantly, when the level of P&L dependence across market participants increases, as was the case during the recent financial crisis. Therefore, our evidence demonstrably shows that CoMargin provides more protection to CCPs when they need it most.⁹

⁸ CoMargin adopts a conditional VaR setting similar to that in Adrian and Brunnermeier's (2011) CoVaR. However, it is important to note that the objective and estimation of these methodologies are radically different. CoMargin is a methodology for computing robust margin requirements. Its estimation is based on a simulation or stress testing approach. CoVaR, on the other hand, is a methodology to assess the contribution and exposure of financial institutions to market-wide tail risks and its estimation is based on quantile regressions.

⁹ These results are robust to equalizing the aggregate margin collections of the VaR and SPAN systems to CoMargin levels. When the P&Ls of clearing members are independent, CoMargin collects the same amount of collateral as existing margining systems. When

This paper makes two important contributions to the literature. Our first contribution is methodological. We develop a novel margining system that internalizes market interdependencies and enhances the stability and resiliency of CCPs. Our approach aims at addressing current concerns associated with CCPs, particularly in terms of systemic risk, and offers a general framework to think about collateral allocation in a broad range of financial markets, such as repo, securities lending, and central bank liquidity operations, among others. Our second contribution is empirical. We conduct an extensive analysis of the margining systems widely used in CCPs. To the best of our knowledge, this is the first study that uses actual trading positions of clearing members. Our innovative data set allows us to conduct our analysis without the need to assume the trading behavior of market participants.

Our paper complements the nascent literature on derivatives clearing. Duffie and Zhu (2011) show that the optimal number of CCPs needed to minimize counterparty default exposure is one. Duffie, Scheicher and Vuillemeys (2014) provide an empirical analysis of the collateral requirements induced by broader application of central clearing. Ghamami (2014) theoretically studies the default waterfall resources of a CCP and derives optimal levels for the capital of clearing members and the CCP. Menkveld (2013) develops a model for centralized clearing focused on systemic liquidation risk due to the default of market participants.¹⁰ Loon and Zhong (2014) empirically show that centrally clearing credit default swap (CDS) contracts reduces counterparty risk, hence increasing the value of credit protection and improving liquidity (see also Slive, Witmer and Woodman, 2012, Arora, Gandhi and Longstaff, 2012, and Bernstein, Hughson and Weidenmier, 2014). Following Gârleanu and Pedersen (2011), Hedegaard (2013) tests the effect of margins on futures prices using data on 597 margin changes on CME futures contracts. More directly relevant to our study is Jones and Pérignon (2013) who show that the most severe losses of the largest

they are not independent, the additional margin collected under CoMargin depends on the coverage level selected by the CCP. If we were to use a more loose coverage level for CoMargin in our tests, the additional margin would be mechanically reduced. It would even be possible to select the coverage rate such that CoMargin would lead to the *same* aggregate margin as SPAN but, of course, with a different margin allocation across members.

¹⁰ Other theoretical studies on derivatives clearing include Biais, Heider and Hoerova (2012, 2014), Koepl, Monnet and Temzelides (2012), Fontaine, Pérez Saiz and Slive (2013), and Acharya and Bisin (2014).

clearing members of the CME tend to occur on the same days. These events are precisely what our CoMargin framework aims to prevent by internalizing P&L dependence.

Recently, Menkveld (2014) proposed an alternative margining system called Margin(A) that accounts for similarities in trading positions across clearing members. Following Duffie and Zhu (2011), he considers the aggregate exposure of the CCP as the sum of all potential losses in clearing members' portfolios. Under the assumption that losses are normally distributed, the total amount of margin that the CCP should collect from all of its members can be derived. Margin requirements for each member are then assigned using an allocation rule.

CoMargin has significant practical and theoretical advantages over Margin(A). First, because it is scenario-based, CoMargin is robust to a wide variety of distributions and loss dependence structures, including non-linear ones. Margin(A), on the other hand, crucially relies on the normality assumption of clearing member losses and it is constrained to linear dependence. CoMargin's ability to capture different dependence structures makes it appropriate and practical for many derivative products with non-linear payoffs, including CDS and options. This is a crucial advantage, given that many of these contracts are now required to be centrally cleared in many jurisdictions. Second, by construction, CoMargin allows risk managers to target an actual coverage probability that can be backtested according to regulatory principles. In contrast, an actual coverage probability cannot be properly targeted in Margin (A).

In addition, Menkveld (2014) empirically assesses Margin(A) using equities from Denmark, Finland, and Sweden. The use of equities in this assessment might not reflect the fact that derivatives often generate tail-dependence in the P&Ls of clearing members. Our empirical analysis, on the other hand, is based on margin requirements for actual derivatives positions that span more than eight years and include the recent financial crisis (2003 – 2011). Furthermore, our dataset allows us to distinguish between client and firm trading.

The remainder of the paper is organized as follows. In Section 2, we describe how margin requirements are currently estimated under the SPAN and VaR margining systems. In Section 3, we present the theoretical foundations of the CoMargin system and highlight some of its properties with simulations. We discuss the implementation of CoMargin in Section 4. In Section 5 we

demonstrate its empirical effectiveness using data from the Canadian Derivatives Clearing Corporation and provide concluding remarks in Section 6.

2. Standard Margining Systems

2.1. Derivatives Market

Consider a derivatives exchange with N clearing members and D derivatives securities (futures, options, CDS, etc.) written on U underlying assets. In practice, each clearing member usually has two accounts with the CCP: one to manage client trades, called a client account, and one to manage proprietary trades, called a firm account. We turn our focus to firm accounts as they are the most important source of risk within the CCP (Jones and Pérignon, 2013). Nevertheless, our methodology can be generalized to include all accounts.

Let $w_{d,i,t}$ be the number of d contracts in the derivatives portfolio of the firm account of clearing member i , for $d = 1, \dots, D$ and $i = 1, \dots, N$, at the end of day t , such that:

$$w_{i,t} = \begin{bmatrix} w_{1,i,t} \\ \vdots \\ w_{D,i,t} \end{bmatrix} \quad (1)$$

Initial margins are collected every day for each clearing member's account to guarantee the performance of their obligations and to guard the clearing house against default over a period of one day. Unlike margins collected for client accounts, those for firm accounts are computed at the portfolio level and allow for netting across positions. Let $B_{i,t}$ be the initial firm margin collected by the CCP from clearing member i at the end of day t . This margin is a function of the outstanding firm trading positions $w_{i,t}$ of member i .

We assume that current exposures are settled daily. Thus, a variation margin amount, $V_{i,t}$, equivalent to the profits or losses in the portfolio of clearing member i on day t , is deposited or withdrawn, respectively, from its margin account at the end of the trading day. By construction, the sum of the variation margins across all accounts (N firm accounts plus N client accounts = $2N$ accounts), is equal to zero as for every buyer there is a seller. However, the sum of the variation margins across the N firm accounts can be different from zero.

Our interest focuses on cases when trading losses exceed margin requirements; that is, when $V_{i,t} \leq -B_{i,t-1}$. In these cases, we say that firm i has experienced an exceedance. Identifying firms in this state is important because they have an incentive to default on their positions or to delay payment on their obligations, which generates a shortfall in the market that needs to be covered by the CCP. Given the limited funds available to the CCP, simultaneous exceedance events can threaten its stability and survival.

2.2. SPAN Margin

The CME, the world's largest derivatives exchange, introduced the SPAN margining methodology in 1988. It has since become the most widely used margining system in derivatives exchanges around the world. Every day following the market close, clearing houses such as the CDCC, the CME, Eurex, LCH.Clearnet, Nymex and the Options Clearing Corporation (OCC), among others, use the SPAN system to determine the margin requirements of their members.

SPAN is a scenario-based methodology that is used to assess potential changes in the value of the derivatives held by each clearing member. However, SPAN does not take a portfolio-wide approach. Instead, it divides each portfolio into contract families, defined as groups of contracts that share the same underlying asset, and estimates a charge for each family independently. Thus, for a portfolio with $d \leq D$ derivatives written on $u \leq U$ underlying assets, the SPAN system computes initial margin requirements for each of the u contract families.

To compute margin requirements for a family of derivatives, the SPAN system simulates one-day-ahead changes in the value of each contract by using sixteen scenarios that vary the price and the volatility of the underlying asset, as well as the time to expiration of the contract (see Table 1). The range of the potential price changes of the underlying asset usually covers 99% of its daily price movements over a historical calibration window. A similar approach is adopted for the volatility. Extreme price changes are used to assess potential changes in deep out of the money options. The scenario analysis yields a risk array for each contract that contains sixteen one-day-ahead potential

value changes (i.e., each maturity and each strike price has its own array).¹¹ The scenario with the worst potential loss for the entire contract family is identified and that loss becomes the first part of the contract family charge.

The second part of the contract family charge consists of a discretionary adjustment that is needed because contracts with different expiration months are assumed to be equivalent in the scenario analysis. In other words, long and short positions written on the same underlying asset but with different expiration months offset each other. Therefore, risk managers are required to add an *intra-commodity spread charge* to the worst case scenario loss to account for time-spread trading. The resulting value is the contract family charge.

The collateral requirement for an entire portfolio is computed by aggregating the charges across all of its contract families. However, once again, risk managers are required to use discretionary aggregation rules to account for commodity-spread trading (i.e., simultaneous long and short positions in contracts with the same expiration months but written on different but correlated underlying assets). These adjustments are known as *inter-commodity spread charges*.

It is important to note that both intra- and inter-commodity spread charges involve the discretion of risk managers. Thus, these adjustments are rarely consistent across commodities, market conditions or clearing houses. This situation coupled with the fact that the SPAN system targets underlying price and volatility ranges, instead of the probability of portfolio-wide margin-exceeding losses, make the SPAN system inconsistent across time and markets in terms of its P&L coverage.

2.3. VaR Margin

VaR is defined as a lower quantile of a P&L distribution. It is the standard measure used to assess the aggregate risk exposure of banks (Berkowitz and O'Brien, 2002; Berkowitz, Christoffersen and Pelletier, 2011), as well as their regulatory capital requirements (Adrian and Shin, 2014). VaR can also be used to set margins on a derivatives exchange. In this case, the margin requirement corresponds to a given quantile of a clearing member's one-day-ahead P&L distribution.

¹¹ The projected price changes of non-linear contracts, such as options, are obtained by using numerical valuation methods or option pricing models.

Definition 1: The VaR margin of firm i , B_i , corresponds to the α quantile of its P&L distribution:

$$\Pr(V_{i,t+1} \leq -B_{i,t}) = \alpha \quad (2)$$

The coverage level, determined by α , depends on the CCP's risk aversion and additional available financial resources (e.g. default fund) that could be used if a member defaults.

Like the SPAN system, the VaR margin method is applied on a firm-by-firm basis using a scenario analysis. However, the scenarios are applied to the entire portfolio. More specifically, we consider S scenarios derived from simulated one-day-ahead changes in the value of the price and the volatility of the underlying assets and use them to evaluate each clearing member's entire portfolio. The hypothetical P&L or variation margin of each clearing member is computed by *marking-to-model* its positions in each scenario. Thus, for each clearing member and date t , we obtain a simulated sample of daily P&Ls denoted $\{v_{i,t+1}^s\}_{s=1}^S$ that can be used to estimate the VaR margin requirement as follows:

$$\hat{B}_{i,t} = -\text{quantile}(\{v_{i,t+1}^s\}_{s=1}^S, \alpha) \quad (3)$$

3. CoMargin

3.1. Concept

The VaR and SPAN collateral systems only focus on firm specific risk; that is, the unconditional probability of an individual clearing member experiencing a margin-exceeding loss. By adopting either method, the clearing house guards itself from unique or independent exceedances, but it leaves itself exposed to simultaneous exceedance events across firms. These events, however, tend to be more economically significant because they place a more substantial burden on the resources of the clearing house.

Consider the VaR margin of firms i and j . The probability of simultaneous exceedances is given by:

$$\Pr[(V_{i,t+1} \leq -B_{i,t}) \cap (V_{j,t+1} \leq -B_{j,t})] \quad (4)$$

$$= \Pr(V_{i,t+1} \leq -B_{i,t} | V_{j,t+1} \leq -B_{j,t}) \times \Pr(V_{j,t+1} \leq -B_{j,t})$$

Equation 4 shows that simultaneous exceedance events tend to happen more frequently not only when firm specific risk increases (i.e., when $\Pr(V_{j,t+1} \leq -B_{j,t})$ increases), but also when P&L dependence increases (i.e., when $\Pr(V_{i,t+1} \leq -B_{i,t} | V_{j,t+1} \leq -B_{j,t})$ increases). In the first case, firms are more likely to experience losses that exceed their collateral levels in all states of the world. In the second case, firms are more likely to experience these losses at the same time as other firms, either because they hold similar positions (i.e., trade crowdedness is high) or because underlying assets have a tendency to move together (i.e., underlying asset comovement is high). However, VaR and SPAN margins completely disregard P&L dependence and its potential effect on the stability of the CCP. In the case of the VaR system, risk managers only target unconditional exceedance probabilities by setting a coverage level $1 - \alpha$ for each clearing member individually. In the case of the SPAN system, risk managers do not have direct control over the unconditional exceedance probabilities, so the clearing house is potentially left even more vulnerable to simultaneous exceedance events.

Now, consider a fully orthogonal market; that is, a situation in which firms have orthogonal firm trading positions and the underlying asset returns are also orthogonal. In this case, firms have orthogonal risk exposures and their exceedance probabilities are independent.¹² Under the VaR system this means:

$$\Pr(V_{i,t+1} \leq -B_{i,t} | V_{j,t+1} \leq -B_{j,t}) = \alpha \quad (5)$$

and

$$\Pr[(V_{i,t+1} \leq -B_{i,t}) \cap (V_{j,t+1} \leq -B_{j,t})] = \alpha^2 \quad (6)$$

Equation 6 has an important implication for market stability, which we define as constancy in the probability of exceedance events. It shows that given a common coverage probability, a fully orthogonal market has the minimum variation in the probability of joint exceedances. More

¹² Obviously, a fully orthogonal market *across all 2N accounts* (i.e., all firm and client accounts) cannot exist as it would violate the zero-sum property for variation margins.

specifically, once the risk manager selects the target α , the probabilities of simultaneous exceedance events are also fixed (i.e., α^2 for two events, α^3 for three events and so on). This property holds true regardless of the collateral system being adopted by the clearing house. Therefore, a fully orthogonal market provides a conceptual benchmark to assess the stability of a margining system.

With this in mind, we propose a new collateral system, called CoMargin, which enhances financial stability by taking into account the dependence of clearing members' P&Ls.

Definition 2: The CoMargin of firm i , $B_t^{i|j \neq i}$, corresponds to the α quantile of its P&L distribution conditional on an event affecting a set of firms that exclude firm i :

$$\Pr(V_{i,t+1} \leq -B_t^{i|j \neq i} | \mathbf{C}(V_{j \neq i,t+1})) = \alpha \quad (7)$$

Notice that CoMargin requires us to define an event for a conditioning set of firms that exclude firm i . We define this event as the financial distress (i.e., a loss in excess of $\alpha\%$ VaR) of at least one of the firms in the conditioning set.

In the most general case, the conditioning set of firms could include all of the remaining $N-1$ firms in the CCP, excluding firm i , such that:¹³

$$\mathbf{C}(V_{j \neq i,t+1}) = \bigcup_{j=1, j \neq i}^N (V_{j,t+1} \leq -B_{j,t}) \quad (8)$$

Alternatively, we can narrow the number of firms contained in the conditioning set based on their size or risk. For example, the Principles for Financial Market Infrastructures (CPSS-IOSCO, 2012) suggest selecting the two firms with the largest expected shortfall.

¹³ The conditioning event presented in equation 8 is different from that used by Adrian and Brunnermeier (2011) to define CoVaR. They consider either the distress of a single institution or the market. In contrast, our conditioning event is multidimensional and requires that at least one firm in the conditioning set is in financial distress. Furthermore, similar to Girardi and Ergun (2013), we use a less-than-or-equal sign in the conditioning event. This reflects the fact that we define financial distress as a range, as opposed to a point, in the P&L distribution.

A nice feature of CoMargin is that it achieves exceedance probabilities that are consistent with those of a fully orthogonal market. For instance, with $N = 2$, we know through Bayes' theorem that:

$$\Pr(V_{i,t+1} \leq -B_t^{ij} | V_{j,t+1} \leq -B_{j,t}) = \frac{\Pr[(V_{i,t+1} \leq -B_t^{ij}) \cap (V_{j,t+1} \leq -B_{j,t})]}{\Pr(V_{j,t+1} \leq -B_{j,t})} \quad (9)$$

where B_t^{ij} denotes the CoMargin of firm i , conditional on the financial distress of firm j . Thus, the numerator represents the joint probability of i exceeding its CoMargin and j experiencing financial distress. From definitions 1 and 2, we can see that:

$$\Pr[(V_{i,t+1} \leq -B_t^{ij}) \cap (V_{j,t+1} \leq -B_{j,t})] = \alpha^2 \quad (10)$$

This alternative expression shows that with CoMargin, the probability of a firm exceeding its margin when another firm is in financial distress corresponds to that obtained in a fully orthogonal market (α^2). Put it simply, CoMargin “orthogonalizes” the risk exposures of the CCP; thus, enhancing its stability.¹⁴ Furthermore, comparing equations (6) and (10) shows that when the market is orthogonal, CoMargin and VaR margin requirements are equivalent. Thus, any differences between the collateral requirements of these two systems can be attributed to P&L dependence.

Finally, notice that there are other techniques that we could have used to capture P&L dependence in our margining system. These range from simple methods, such as linear correlation or quadrant dependence, to more sophisticated extreme dependence measures discussed in Poon, Rockinger and Tawn (2004), Bae, Karolyi and Stulz (2003) and Christoffersen et al. (2013) or systemic risk measures surveyed in Bisias et al. (2012). However, in our case, dependence measures needed to be transformed to dollar values to compute margins.¹⁵ The quantile-based dependence measure embedded in CoMargin offers the distinctive advantage of directly corresponding to the dollar

¹⁴ This property also holds when the number of firms is greater than two.

¹⁵ For instance, one could compute the SES/MES proposed by Acharya et al. (2010), the SRISK of Brownlees and Engle (2012), or any other dependence measure for all clearing members. Then, a bucketing procedure or another transformation would be required to translate risk estimates into dollar-values for margin requirements.

value that the CCP should collect as margin.

3.2. Monte Carlo Simulations

In order to illustrate the performance of the CoMargin system, we consider the case of four clearing members, where two of them, members 1 and 2, have correlated P&Ls, such that $V \sim N(0, \Sigma)$ where:

$$V = (V_1, V_2, V_3, V_4)' \text{ and } \Sigma = \begin{pmatrix} 1 & \rho & 0 & 0 \\ \rho & 1 & 0 & 0 \\ 0 & 0 & 1 & 0 \\ 0 & 0 & 0 & 1 \end{pmatrix}$$

We allow the correlation between the P&Ls of firms 1 and 2, ρ , to increase from 0 to 0.8. As explained above, the rising correlation between the P&Ls of these firms can reflect an increase in the similarity of their firm trading positions or an increase in the comovement of the underlying assets. Panel A of Figure 1 shows the margin requirements for each clearing member under both the VaR and CoMargin systems for the levels of correlation being considered. To estimate the CoMargin of a given clearing member, we define the conditioning event as at least one of the other three firms being in financial distress.

Panel A of Figure 1 shows that VaR margin remains constant for all firms regardless of their correlation level because this method does not take into account P&L dependence. Consistent with the explanation in the previous section, CoMargin and VaR margin are equal for all firms when $\rho = 0$; that is, when there is no P&L dependence. However, notice that CoMargin is greater than VaR margin when $\rho > 0$; that is, when there is P&L dependence. In addition, CoMargin increases as ρ increases; that is, as P&L dependence increases.

It is important to note that there are two possible reasons why CoMargin could be more effective than VaR margin at reducing conditional margin exceedances. The first reason is that there is an “allocation effect”; that is, CoMargin provides a better allocation of collateral. An alternative reason is that there is a “level effect”. This means that CoMargin simply collects more aggregate collateral and, as a consequence, has a higher coverage level. We show that allocations and not aggregate margin collections drive the relative effectiveness of CoMargin by reporting a Budget-

Neutral VaR (BNVaR) margin. This margining scheme collects the same amount of aggregate collateral as the CoMargin system but it does so by distributing additional margin requirements evenly across all clearing members (rather than as a function of their P&L dependence).¹⁶ Thus, this process effectively cancels out the level effect and allows us to assess the merits of each margining system based on their allocations.

The BNVaR margin of firm i at time t , $B_{i,t}^0$, is defined as:

$$B_{i,t}^0 = B_{i,t} + \frac{\sum_{j=1}^N B_t^{i|j \neq i} - \sum_{i=1}^N B_{i,t}}{N} \quad (11)$$

Panel B of Figure 1 shows the theoretical performance of the VaR, BNVaR and CoMargin systems at the clearing member level. The horizontal line in these charts highlights the values prevalent when $\rho = 0$; that is, when the risk exposures of members are orthogonal. Panel B shows the probability of a given clearing member exceeding its margin conditional on at least one other clearing member being in financial distress. When $\rho = 0$, all three margining systems provide the same level of coverage. However, as ρ increases, the VaR and BNVaR margins provide less coverage when at least one clearing member is in financial distress. On the other hand, only CoMargin keeps the coverage level constant.

Table 2 reports the theoretical performance of the different margining systems at the CCP level. The table reports the unconditional probability of having at least one exceedance, the probability of having additional exceedances given that one has occurred, and the expected shortfalls associated with these events. Panel C of Figure 1 extends these last set of results to up to four exceedance events. Our findings show once again that when $\rho = 0$, all three margining systems provide the same coverage to the CCP, but as ρ increases, CoMargin provides the best overall coverage.

The unconditional probabilities in Table 2 suggest that BNVaR margin provides the best unconditional coverage as correlation increases. Nevertheless, this result is expected. In our

¹⁶ An alternative budget-neutral margin scheme would be to adjust the α parameter for CoMargin such that its aggregate margin corresponds to that under an alternative system (i.e., VaR or SPAN).

example all four firms are identical except for their correlation level. Since BNVaR collects more aggregate funds than VaR margin and it does so evenly across all clearing members, it is equivalent to a VaR margin with a lower α . This higher coverage level embedded in BNVaR reduces the unconditional probability of individual margin exceedances. However, as shown in Table 2, this does not reduce the conditional probability of experiencing additional (i.e. simultaneous) exceedance events, particularly as P&L dependence increases.

Lastly, Panel C of Figure 1 shows the shortfall that the CCP is expected to cover given a minimum number of margin exceedances. Notice that both CoMargin and BNVaR margin provide similar results that outperform VaR for $\rho > 0$.

We repeat the previous exercise but for P&Ls that are jointly Student t distributed with degrees of freedom ν , $V \sim t_\nu(0, \Sigma)$. Changing the distributional assumption of the previous exercise from a normal to a Student t multivariate distribution allows us to simulate scenarios where all clearing members have some level of tail dependence in their P&Ls, which is consistent with empirical evidence. The variance-covariance structure, Σ , is the same as that considered in the Gaussian distribution example, however, in this case, we set $\rho = 0.4$ and let the degrees of freedom decrease from 30 to 5.¹⁷ Thus, the resulting P&L distributions have progressively fatter tails.

The results of this exercise, presented in Table 2, are consistent with those obtained under the Gaussian assumption, but they highlight an important finding: CoMargin is able to capture P&L dependence structures that go beyond correlation. Recall that the entire P&L dependence structure is fully characterized by correlation only if P&Ls are normally distributed. However, asset prices and P&Ls, particularly those of non-linear portfolios, rarely follow normal distributions.

4. Implementing CoMargin

4.1. Scenario Generation

One common feature of all margining methods is that they are scenario based. As a consequence, generating meaningful scenarios is a crucial stage when setting margin requirements. Unlike the

¹⁷ We conducted a similar experiment using $\rho = 0$ which leads to the same conclusions. The results are available upon request by contacting the authors.

SPAN margining system, VaR margin and CoMargin use a portfolio-wide approach. This allows us to take into account the asset comovement within the portfolio of each clearing member without the need for ad-hoc netting adjustments (i.e., the inter- and intra-commodity spreads explained in the previous section). In order to assess the potential P&L of the entire portfolio of each clearing member, we need to jointly simulate S vectors of one-day-ahead changes in the underlying asset prices, $\{r_{u,t+1}^s\}_{s=1}^S$. While there are different ways to estimate multivariate probability distribution functions, we suggest using a copula to link the marginal probability distribution functions, say $F_1(r_1), F_2(r_2), \dots, F_U(r_U)$, to form a multivariate probability distribution function, $F(r_1, r_2, \dots, r_U)$, where r_x is the standardized return of underlying asset x and U is the number of assets underlying the derivatives cleared by the CCP.

Using copulas to model the multivariate structure of underlying asset returns has advantages in this context. First, marginal distributions do not need to be similar to each other to be linked together with a copula structure. Second, the choice of the copula or multivariate structure is not constrained by the choice of the marginal distributions. Third, copulas can be used with U marginal distributions to cover all of the underlying assets cleared by the CCP (see Oh and Patton, 2012). Lastly, the use of copulas allows us to model the tails of the marginal distributions and the tail dependence across underlying assets separately. This feature is particularly important in our case because the likelihood of an extreme underlying asset return might increase either because of fatter tails in their marginal distributions or because of fatter tails in their multivariate distribution. We use Student t copulas in our modeling because, unlike their Gaussian counterparts, they more closely resemble some of the stylized features of asset returns, such as fat tails in the marginal distributions and multivariate tail dependence.¹⁸

We implement a two-stage semi-parametric approach to estimate a U -dimensional copula for the underlying asset returns. The first stage consists of estimating the empirical marginal distributions

¹⁸ A Student t copula corresponds to the dependence structure implied by a multivariate Student t distribution. It is fully characterized by the variance-covariance matrix of standardized returns and the degrees of freedom, ν . The degrees of freedom define the probability mass assigned to simultaneous extreme returns (both positive and negative); the lower the degrees of freedom, the higher the probability of experiencing simultaneous extreme returns relative to the Gaussian copula. However, as $\nu \rightarrow \infty$ the Student t copula converges to its Gaussian counterpart.

of the returns of each underlying asset. The second stage consists of estimating the t-copula parameters, R (correlation matrix) and ν (degrees of freedom), through maximum likelihood. This approach is commonly known as the canonical maximum likelihood estimation method (Genest, Ghoudi and Rivest, 1995). Once the copula parameters are estimated, we use the implied multivariate structure to simulate potential changes in the price of the underlying assets.¹⁹

We use a fixed-length estimation window that is rolled daily to simulate new scenarios every day. On each day, once the S potential changes in the price of the underlying assets have been simulated, we mark-to-model all of the derivatives in the portfolio of each clearing member. We then use this simulated sample $\{v_{i,t+1}^s\}_{s=1}^S$ to estimate VaR margin as described in Section 2.3. To estimate CoMargin, we use the simulated samples for all clearing members,

$\{v_{1,t+1}^s, v_{2,t+1}^s, \dots, v_{n,t+1}^s\}_{s=1}^S$, and follow the procedure described in the following section.

4.2. Estimation

In this section, we show how to estimate CoMargin requirements from simulated P&Ls for the case of two clearing members. The Appendix explains the estimation procedure for the more general case when $N > 2$.

Given the simulated sample $\{v_{i,t+1}^s, v_{j,t+1}^s\}_{s=1}^S$, conditional on $B_t^{i|j}$, a simple estimate of the joint probability $\Pr[(V_{i,t+1} \leq -B_t^{i|j}) \cap (V_{j,t+1} \leq -B_{j,t})]$, denoted $P_t^{i,j}$, is given by:

$$\hat{P}_t^{i,j} = \frac{1}{S} \sum_{s=1}^S \mathbf{I}(v_{i,t+1}^s \leq -B_t^{i|j}) \times \mathbf{I}(v_{j,t+1}^s \leq -B_{j,t}) \quad (12)$$

where $v_{i,t+1}^s$ and $v_{j,t+1}^s$ correspond to the s^{th} simulated P&L of firms i and j , respectively. Given this result, we can now estimate $B_t^{i|j}$. For each time t and for each firm i , we look for the value $B_t^{i|j}$, such that the distance $\hat{P}_t^{i,j} - \alpha^2$ is minimized:

¹⁹ These simulations can also be obtained for different correlation matrices. For instance, a pre-defined range can be obtained from 95% confidence intervals used to forecast R through the Dynamic Conditional Correlation method proposed by Engle (2002).

$$\hat{B}_t^{i|j} = \arg \min_{\{B_t^{i|j}\}} (\hat{P}_t^{i,j} - \alpha^2)^2 \quad (13)$$

Thus, for each firm i , we end up with a time series of CoMargin requirements $\{\hat{B}_t^{i|j}\}_{t=1}^T$ for which confidence bounds can be bootstrapped.

4.3. Backtesting

One way to assess the effectiveness of a margining system is by backtesting it (Hurlin and Pérignon, 2012). Backtesting aims at identifying misspecified models that lead to either excessive or insufficient coverage for the CCP relative to a target. Therefore, if a margining system cannot be backtested using formal statistical methods, we cannot identify its potential shortcomings and fine tune it to meet its objectives.

VaR margins can be easily backtested because they are defined by the quantile of a P&L distribution. As it is the case with VaR margin, CoMargin allows us to test the null hypothesis of an individual member exceeding its margin requirement. More importantly, however, is the fact that we can also test the probability of exceedances conditional on the financial distress of other firms, as defined by the CoMargin of firm i , $B_t^{i|j}$. The null hypothesis in this case becomes:

$$H_0: \Pr(V_{i,t+1} \leq -B_t^{i|j} | V_{j,t+1} \leq -B_{j,t}) = \alpha \quad (14)$$

Since the null implies that $E[\mathbf{I}(V_{i,t+1} \leq -B_t^{i|j}) \times \mathbf{I}(V_{j,t+1} \leq -B_{j,t})] = \alpha$, a simple likelihood-ratio (LR) test can be used for the testing procedure (Christoffersen, 2009).

To assess the conditional probability of exceedances, we use the historical paths of the P&Ls for both members i and j ; i.e., $\{v_{i,t+1}\}_{t=1}^T$ and $\{v_{j,t+1}\}_{t=1}^T$. The corresponding LR test statistic, denoted $LR_{i|j}$, takes the form:

$$LR_{i|j} = -2\ln[(1 - \alpha)^{T-N_{i|j}} \alpha^{N_{i|j}}] + 2\ln \left[\left(1 - \frac{N_{i|j}}{T}\right)^{T-N_{i|j}} \frac{N_{i|j}}{T} \right] \quad (15)$$

where $N_{i|j}$ denotes the total number of joint past violations observed for both members i and j ; that is, $N_{i|j} = \sum_{t=1}^T \mathbf{I}(v_{i,t+1} \leq -B_t^{i|j}) \times \mathbf{I}(v_{j,t+1} \leq -B_{j,t})$.

5. Empirical Analysis

5.1. Data and Descriptive Statistics

In this section we compare the empirical performance of the SPAN, VaR and CoMargin systems by using proprietary data from the Canadian Derivatives Clearing Corporation (CDCC). The CDCC is the clearing house of the TMX Montreal Exchange. The dataset includes the daily trading positions at market close for each clearing member on the three-month Canadian Bankers' Acceptance Futures (BAX), the ten-year Government of Canada Bond Futures (CGB), and the S&P/TSX 60 Index Standard Futures (SXF) for the forty-eight clearing members active in the CDCC between January 2, 2003 and March 31, 2011. To the best of our knowledge no other academic study has ever used actual clearing member positions.

Table 3 presents a short description of the data. In a derivatives exchange, on any given day, there are many delivery dates available on each underlying asset. Over the sample period there were 45 different delivery dates available for BAX contracts and 34 for CGB and SXF contracts. Thus, the sample includes a total of 113 futures contracts. Table 4 summarizes the specifications of these contracts. The contracts in our sample do not constitute the full set of derivatives cleared by the CDCC. However, they represent around 75% its clearing activity. The documentation provided by CDCC states that the BAX, CGB and SXF are among the most actively traded derivatives in Canada. Furthermore, BAX and CGB are the most actively traded cleared interest rate contracts in the country (Campbell and Chung 2003 and TMX Montreal Exchange 2013a,b,c).

Table 5 shows the summary statistics for the contracts in the sample. Panel A shows the aggregate statistics for all 113 contracts and Panels B to D, report the summary statistics by underlying asset. On a typical day, there were approximately 20 active contracts, 12 of them were BAX, four of them were CGB and the remaining four were SXF. On average, contracts remained active for 363 trading days. However, there is a significant dispersion across underlying assets. BAX contracts remained active for 551 days, whereas CGB and SXF contracts remained active for 239 and 237 days,

respectively. BAX contracts were also the most actively traded, with an average daily gross open interest of 275,000. The corresponding value for CGB and SXF contracts was less than half of that for BAX at 131,000 and 111,000, respectively.

CDCC members have access to three accounts to submit trades for clearing: a firm, a client and an omnibus account. The firm account is used by clearing members to submit their own trades (i.e., conduct proprietary trading). The client account is used to submit trades on behalf of clearing members' clients. The omnibus account is used for all other clearing activities and is the least active account across all clearing members.

Our dataset includes 21 firm, 23 client, and 16 omnibus accounts that were active on at least one day of the sample period. An account is considered to be active on a given day if it has an open interest (i.e., long or short position at the end of the trading day) in at least one underlying asset. Due to disclosure restrictions, we are unable to report the owners of each active account by type. However, Table 6 provides the full list of clearing members that had at least one active client, firm or omnibus account during the sample period. Notice that this list includes more clearing members than those currently affiliated with the CDCC because some members entered and exited the market during this period.

In our tests, we only consider firm accounts and we do so for three main reasons. First, house trading has been identified as the main source of risk on CCPs (Jones and Pérignon, 2013). Second, considering only a subset of accounts allows us to apply the CoMargin methodology with any number of firms in the conditioning set because the sum of the variation margins is not zero. Third, unlike firm margins, client margins are not set at the portfolio level but, instead, on a client-by-client basis.

The daily settlement prices for the underlying assets and the futures contracts in the sample were obtained from Bloomberg and are plotted in Figure 2. Panel A shows the time series of underlying asset prices, Panel B shows the underlying asset returns and Panel C shows the settlement futures prices for all delivery dates. Lines in different colours represent different delivery dates. It is evident from Panel B that the volatility of the underlying assets increased dramatically after the

onset of the financial crisis in mid-2007. In addition, Panel C shows an increase in the spread of futures prices during the same period, particularly for BAX contracts.

Figure 3 plots the daily stacked P&L values implied from the positions in active firm accounts. For each date t , $n_t^a \in N$ observations are plotted, which correspond to the P&L of the n_t^a clearing members that had an active account on that day. Notice how the volatility of the P&Ls increased dramatically at the beginning of the financial crisis. This is consistent with the trends described for the underlying and futures prices in Figure 2. Therefore, we consider two sub-periods in our analysis: the pre-crisis period, from January 2, 2003 to July 31, 2007, and the crisis period, from August 1, 2007 to March 31, 2011.

Table 7 presents the summary statistics for the firm accounts in the sample. Panel A reports the values for the full sample period and Panels B and C present the values for the pre-crisis and crisis periods, respectively. On a typical day, there were approximately 12 clearing members with active firm accounts. This number remained relatively stable during the pre-crisis and crisis periods. The average account was active for 56% of the days in the sample (1,145 out of 2,066 days). The corresponding proportion is 75% (858 out of 1,148 days) for the pre-crisis period and 56% (516 out of 918 days) for the crisis period. The relatively lower activity during the crisis period was partially influenced by the fact that some clearing members exited the market. The P&L numbers reported in the table focus exclusively on active accounts. The typical active account reported an implied daily loss of \$60,000 on the futures contracts listed in the sample. During the pre-crisis period, these accounts reported daily losses of \$164,000. However, during the crisis period, the average account reported a daily profit of \$65,000. These profits were mostly derived from long positions in BAX contracts. Over the entire sample period, the typical account made an implied loss of \$38,000. The corresponding numbers are a loss of \$119,000 and a profit of \$39,000 for the pre-crisis and crisis periods, respectively.²⁰

²⁰ It is important to notice that the P&L values reported in this paper are those implied by the positions held by the clearing members in their firm accounts on the contracts included in the sample. The actual accounts of these clearing members, however, included positions in other contracts cleared by the CDCC that are not included in our sample. In addition, our P&L values do not include trading revenues from other sources, such as non-cleared OTC transactions.

5.2. Empirical Performance

Using the daily trading positions in each firm account, we compute the initial margin that should be collected from each clearing member under the SPAN, VaR and CoMargin systems. We set the risk level α to 2% for the VaR and CoMargin systems and use a rolling estimation window of 500 trading days in all cases. As mentioned in Section 2.2, the SPAN system is estimated using the sixteen scenarios in Table 1. In this study, as we are only dealing with futures contracts, we ignore scenarios based on volatility changes or extreme scenarios, which are targeted to deep out of the money options.²¹ For the VaR and CoMargin systems we consider $S = 100,000$ scenarios that are obtained using the methodology described in Section 4.1. Consistent with our earlier discussion, we set the financial distress threshold for CoMargin at the VaR margin level of the conditioning firms. The conditioning firms are the two clearing members with the highest one-day-ahead Expected Shortfall, $ES_{i,t+1} = E(V_{i,t+1} | V_{i,t+1} \leq -B_{i,t})$.

For consistency across time periods, we ignore the ad-hoc inter- and intra-commodity spreads used in the SPAN system and impose a minimum margin of \$10,000 on all active accounts under all systems. This amount allows us to avoid cases when clearing members are not required to post any collateral because they have matched long and short positions. These cases are likely to result in small exceedances as P&Ls in different contracts do not always offset each other. Thus, imposing a minimum margin amount prevents an upward bias in the number of SPAN exceedances. This amount, however, does not influence the rest of our results as it represents a constant that accounts for less than 0.2% of the average individual daily margin required under all systems.²²

We find that accounting for P&L dependence increases margin significantly. Table 8 reports the summary statistics for the daily margin collected over the full sample period under different margining methods (Panels A and B). The table also reports budget-neutral margins for both SPAN (BNSPAN) and VaR (BNVaR) systems using the same approach as that described in equation 11. The

²¹ The shocks in extreme scenarios 15 and 16 are defined by the risk managers as a percentage increase over the price range (e.g., 20% over the price range). Using an ad hoc extreme change would prevent us from keeping the same 99% confidence interval for all underlying assets. Adding an ad-hoc extreme change only collects more money (i.e., increases the SPAN coverage) but does not change the results.

²² We computed our results under different minimum collateral amounts ranging from \$0 to \$100,000. The results are consistent in all cases. With a minimum collateral of \$0, however, the SPAN system yields a high number of small exceedances.

average aggregate daily margin collected across all clearing members is \$112, \$101 and \$161 million for the SPAN, VaR and CoMargin systems, respectively. The fact that CoMargin collects an extra 44% compared to SPAN margin might appear relatively costly at first sight. However, the CCP has the freedom to choose a higher risk level α to collect less margin, still benefiting from the CoMargin allocation of the collateral. Using budget-neutral margins, we show below that the better performance of CoMargin relative to other systems is not simply the result of collecting higher margins, but rather the outcome of a better collateral allocation process across clearing members.

Panels C and D report the summary statistics for the daily margin collected over the pre-crisis and crisis periods, respectively. As it would be expected given the increased volatility during the financial crisis, both aggregate and individual collateral levels are higher during the crisis period. However, the ranking of margin collections is consistent throughout the full sample period and the two sub-periods being considered. VaR margin consistently collects the least and CoMargin consistently collects the most collateral. Similarly, VaR margin consistently shows the least dispersion and CoMargin consistently shows the most dispersion of collected margin as measured by the standard deviation. This situation arises because CoMargin takes into account the variation of more factors than the other two margining methods (i.e., the factors driving P&L dependence).

Panel A of Figure 4 shows the daily stacked initial margin requirements under the SPAN, VaR and CoMargin systems. The stacking process is the same as that used in the previous section for the P&L values of Figure 3. Notice that all three approaches produce margin requirements that are highly correlated. The average cross-sectional correlation for the full sample period is 0.99 between SPAN and VaR, 0.90 between SPAN and CoMargin, and 0.90 between VaR and CoMargin. The high correlation and low dispersion between the SPAN and VaR systems coupled with the average collection values shown in Table 8, indicate that at the individual clearing member level, SPAN margins behave much like VaR margins but at a higher coverage probability. However, notice that CoMargin is the least correlated of the three systems and shows the widest dispersion. This dispersion is more pronounced during the crisis-period, when P&L dependence is higher. As

mentioned above, this can be explained by the fact that CoMargin converges to VaR margin as P&L dependence decreases and diverges as P&L dependence increases (see Section 3.2).

Panel B of Figure 4 plots the daily P&L of each active clearing member against its initial margin requirement for the entire time series. The 45 and -45 degree lines are indicated in red.

Observations falling below the -45 degree line denote margin-exceeding losses. Notice that of the three margining systems, CoMargin shows the least number of margin exceedances. In addition, unlike the other systems, CoMargin tends to concentrate exceedances in low initial margin, low P&L points. These points represent clearing members with the smallest or least active portfolios; that is, those that are the least likely to pose a systemic threat to the CCP.

Panel C of Figure 4 shows the daily stacked values of the relative variation margin, which is defined as the ratio of P&L to posted initial margin ($V_{i,t}/B_{i,t-1}$). Once again, the stacking process is the same as that used in Figure 3. Observations with a relative variation margin below -1, the level depicted with a red line, represent margin exceedances. Consistent with the study of the CME margins by Jones and Pérignon (2013), SPAN margins exceedances tend to cluster in time. In contrast, the CoMargin system exhibits the lowest number of simultaneous margin exceedances.

Panels A and B of Table 9 summarize the performance of different margining systems over the full sample period. Panels C and D show the corresponding values for the pre-crisis and crisis periods, respectively. The left part of the panels measures unconditional performance in terms of the probability of experiencing at least one exceedance and the expected shortfall if at least one exceedance occurs. The right part of the panels reports the same measures but conditional on at least one member exceeding its margin.

Consistent with the simulation results presented in Section 3, our empirical results show that the CoMargin system outperforms the SPAN and VaR systems in all dimensions (lower frequency of exceedances and expected shortfall), whether these are estimated unconditionally or conditionally. In addition, the relative performance of CoMargin increases when we condition on at least one exceedance event. This finding shows that CoMargin does a better job at protecting the CCP from simultaneous exceedances, even after a clearing member has surpassed its margin.

Furthermore, Panels C and D indicate that the relative performance of CoMargin also improves

during the crisis period, when P&L dependence is more persistent. This indicates that CoMargin tends to provide more protection to the CCP when it is needed most; that is, when simultaneous exceedance events are more likely to occur.

The clearing member-level results in Panels B to D show the probability that a typical clearing member surpasses its margin on any given day and the expected shortfall associated with this event. Once again, the conditional frequency and expected shortfalls are lower for CoMargin than for SPAN and VaR margins. In addition, notice how both the conditional and unconditional frequencies increase for the SPAN and VaR systems during the crisis period relative to the pre-crisis period. These results imply that when P&L dependence increases, SPAN and VaR exceedances are more likely than under CoMargin.

As mentioned earlier, CoMargin might outperform other systems because of a “level effect” (i.e., CoMargin imposes higher margins on average) or an “allocation effect” (i.e., CoMargin collects relatively more margin from interconnected firms). We dissect these two effects by contrasting the performance of CoMargin with that of budget-neutral SPAN and VaR systems (BNSPAN and BNVaR, respectively).²³ By design, the aggregate margin collected by these systems is the same as that collected by CoMargin. Therefore, the level effect is neutralized and any differences in relative performance must be due to allocation effects. More precisely, if CoMargin is truly providing a better allocation mechanism, then budget-neutral methods would effectively transfer margin requirements from firms with high P&L dependence to those with low P&L dependence; thus, leaving the CCP exposed to higher shortfalls. Nevertheless, budget-neutral margins remain risk-based as they collect VaR or SPAN margin plus the difference in aggregate margins between them and CoMargin (see equation 11).

The results displayed in Table 9 show that the allocation effect of CoMargin significantly reduces average shortfall, and especially conditionally on at least one exceedance. Switching from CoMargin to BNSPAN or BNVaR increases the average conditional shortfall by a factor of five (from

²³ Similar to BNVaR, BNSPAN is defined by equation (11) in which $B_{i,t}$ is set to the SPAN margin. Note that when there is large dispersion in the size of the clearing members, as it is the case in our sample, the budget-neutral scheme can impose unrealistically large additional margins on small clearing members when the largest clearing members have correlated P&Ls. As a result, budget-neutral margins are not viable alternative margining systems but instead are only used here as an identification tool.

1.85 to 10.15 or 9.45). Since expected shortfalls ultimately determine the impact on the funds available to the CCP, our findings show that CoMargin allocations enhance the resilience of clearing houses by minimizing the economic impact of adverse events. Furthermore, the allocation effect of CoMargin reduces the conditional frequency of exceedances at the CCP level (from 0.38 to 0.28 for BNSPAN and from 0.36 to 0.28 for BNVaR) but increases the unconditional frequency, which mainly comes from isolated and moderate losses.

6. Conclusion

In this paper, we present a new methodology, called CoMargin, to estimate margin requirements in derivatives CCPs. Our approach is innovative because it explicitly takes into account both the individual risk and the interdependence of the P&Ls of market participants. As a result, CoMargin produces collateral allocations that enhance the stability and resilience of CCPs, thus reducing their systemic risk.

We show that CoMargin outperforms the widely popular SPAN and VaR margining approaches. CoMargin performs particularly well relative to these alternatives when the level of P&L dependence across market participants increases, as was the case during the recent financial crisis. Therefore, our evidence suggests that CoMargin provides more protection to the CCP when it needs it most.

During certain periods, CoMargin significantly increases aggregate collateral levels. However, using budget-neutral methods, we show that the relative performance of CoMargin is driven by its allocation process and not the additional funds collected. Thus, increasing collateral requirements under other systems does not necessarily protect the CCP against simultaneous margin exceedance events.

At a more general level, the paper illustrates the importance of accounting for simultaneous extreme events, or interdependencies, when managing credit risk. Our approach can be seen as a stepping stone that can be generalized and used in different situations, such as estimating collateral requirements for repo and other OTC transactions, assessing capital requirements for

banks and insurance companies, or monitoring the accumulation of credit risk across market participants for regulatory purposes.

Finally, potential improvements to the current framework include reducing the pro-cyclicality of collateral requirements and enriching the scenario generating process. For instance, scenarios could account for endogenous risk or feedback effects. This feature would consider shocks that not only reflect the past evolution of the underlying variables but also the reaction of clearing firms to specific shocks.

Appendix: CoMargin with $N-1$ Conditioning Firms

With $N - 1$ conditioning firms, the CoMargin for firm i , $B_t^{i|j \neq i}$, is defined by:

$$\frac{\Pr \left[\left(V_{i,t+1} \leq -B_t^{i|j \neq i} \right) \cap \mathbf{C}(V_{j \neq i,t+1}) \right]}{\Pr \left[\mathbf{C}(V_{j \neq i,t+1}) \right]} = \alpha \quad (\text{A1})$$

where the conditioning event is that at least one of the $N - 1$ other firms is in financial distress:

$$\Pr \left[\mathbf{C}(V_{j \neq i,t+1}) \right] = \Pr \left[\bigcup_{j=1, j \neq i}^N (V_{j,t+1} \leq -B_{j,t}) \right] \quad (\text{A2})$$

Note that only $N - 1$ firms are considered in the conditioning event, since by definition, firm i is excluded. Then, the estimation method of the CoMargin is similar to the one used with two firms in Section 4.2. Given the simulated sample of P&Ls $\{v_{1i,t+1}^s, \dots, v_{N,t+1}^s\}_{s=1}^S$, a simple estimate of the joint probability given in equation A2, denoted $\hat{P}_t^{j \neq i}$, is given by:

$$\hat{P}_t^{j \neq i} = \frac{1}{S} \sum_{s=1}^S \mathbf{I} \left(\bigcup_{j=1, j \neq i}^N (v_{j,t+1}^s \leq -B_{j,t}) \right) \quad (\text{A3})$$

where $v_{j,t+1}^s$ correspond to the s^{th} simulated P&L of firms j . In a similar way, conditionally on $B_t^{i|j \neq i}$, a simple estimator of the numerator in equation A1, denoted \hat{P}_t , is defined as:

$$\hat{P}_t = \frac{1}{S} \sum_{s=1}^S \mathbf{I} \left(v_{i,t+1}^s \leq -B_t^{i|j \neq i} \right) \times \mathbf{I} \left(\bigcup_{j=1, j \neq i}^N (v_{j,t+1}^s \leq -B_{j,t}) \right) \quad (\text{A4})$$

For each time t and for each firm i , we look for the value $B_t^{i|j \neq i}$ that minimizes the distance between the ratio $\hat{P}_t / \hat{P}_t^{j \neq i}$ and α :

$$\hat{B}_t^{i|j \neq i} = \arg \min_{\{B_t^{i|j \neq i}\}} \left(\frac{\hat{P}_t}{\hat{P}_t^{j \neq i}} - \alpha \right)^2 \quad (\text{A5})$$

Thus, for each firm i , we end up with a time series of CoMargins $\{\hat{B}_t^{i|j \neq i}\}_{t=1}^T$ for which confidence bounds can be bootstrapped.

References

- Acharya, V. V. and Bisin, A., 2014, Counterparty Risk Externality: Centralized versus Over-the-Counter Markets. *Journal of Economic Theory*, 149, 153-182.
- Acharya, V. V., Engle, R., Figlewski, S., Lynch, A., and Subrahmanyam M., 2009, Centralized Clearing for Credit Derivatives. In *Restoring Financial Stability: How to Repair a Failed System*, edited by V. Acharya and M. Richardson (John Wiley & Sons).
- Acharya, V. V., Pedersen, L. H., Philippon, T., and Richardson M. P., 2010, Measuring Systemic Risk. Working Paper, NYU.
- Adrian, T. and Brunnermeier, M. K., 2011, CoVaR. Working Paper, Princeton University and FRB of New York.
- Adrian, T. and Shin, H. S., 2014, Procyclical Leverage and Value-at-Risk. *Review of Financial Studies*, 27, 373-403.
- Arnold, B., Beaver, R., Groeneveld, R., and Meeker, W., 1993, The Nontruncated Marginal of a Truncated Bivariate Normal Distribution. *Psychometrika*, 58, 471-488.
- Arora, N., Gandhi, P., and F. Longstaff, 2012, Counterparty Credit Risk and the Credit Default Swap Market. *Journal of Financial Economics*, 103, 280-293.
- Bae, K. H., Karolyi, A., and Stulz, R. M., 2003, A New Approach to Measuring Financial Contagion. *Review of Financial Studies*, 16, 717-763.
- Bank for International Settlements (BIS), 2014, Derivatives Statistics, September 2014.
- Berkowitz, J., Christoffersen, P. F., and Pelletier, D., 2011, Evaluating Value-at-Risk Models with Desk-Level Data. *Management Science*, 57, 2213-2227.
- Berkowitz, J. and O'Brien, J., 2002, How Accurate Are Value-At-Risk Models at Commercial Banks? *Journal of Finance*, 57, 1093-1111.
- Bernanke, B., 1990, Clearing and Settlement during the Crash. *Review of Financial Studies*, 3, 133-151.
- Bernstein, A., Hughson, E. N., and Weidenmier, M., 2014, Counterparty Risk and the Establishment of the New York Stock Exchange Clearinghouse, Working Paper, NBER, No. 20459.
- Biais, B., Heider, F., and Hoerova, M., 2012, Clearing, Counterparty Risk and Aggregate Risk. *IMF Economic Review*, 60, 193-222.
- Biais, B., Heider, F., and Hoerova, M., 2014, Risk-sharing or risk-taking? An Incentive Theory of Counterparty Risk, Clearing and Margins. Working Paper, Toulouse School of Economics.
- Billio, M., Getmansky, M., Lo, A.W., and Pelizzon L., 2012, Econometric Measures of Connectedness and Systemic Risk in the Finance and Insurance Sectors. *Journal of Financial Economics*, 104, 535-559.
- Bisias, D., Flood, M., Lo, A. W., and Valavanis, S., 2012, A Survey of Systemic Risk Analytics. *Annual Review of Financial Economics*, 4, 255-296.
- Bliss, R. R. and Steigerwald, R. S., 2006, Derivatives Clearing and Settlement: A Comparison of Central Counterparties and Alternative Structures. Working Paper, Federal Reserve Bank of Chicago.
- Booth, G. G., Broussard, J. P., Martikainen, T., and Puttonen, V., 1997, Prudent Margin Levels in the Finnish Stock Index Futures Market. *Management Science*, 43, 1177-1188.
- Boyson, N., Stahel, C. W., and Stulz, R. M., 2010, Hedge Fund Contagion and Liquidity Shocks. *Journal of Finance*, 65, 1789-1816.
- Brownlees, C. T., and Engle, R. F., 2012, Volatility, Correlation and Tails for Systemic Risk Measurement. Working Paper, New York University.

Campbell, B., and Chung, C., 2003, CGB: Poised for Takeoff. An Analysis of the Ten-Year Government of Canada Bond Future Based on Intraday Trading Data. Working Paper, CIRANO.

Chicago Mercantile Exchange, 2012, CME Clearing Financial Safeguards.

Christoffersen, P., 2009, Backtesting. In *Encyclopedia of Quantitative Finance*, R. Cont (Editor), Wiley.

Christoffersen, P., Errunza, V., Jacobs, K., and Langlois, H., 2012, Is the Potential for International Diversification Disappearing? A Dynamic Copula Approach. *Review of Financial Studies*, 25, 3711-3751.

Cotter, J., 2001, Extreme Value Calculations of European Futures Margin Requirements. *Journal of Banking and Finance*, 25, 1475-1502.

CPSS-IOSCO (Committee on Payment and Settlement Systems and International Organization of Securities Commissions), 2012, Principles for Financial Market Infrastructures.

Day, T. E. and Lewis, C. M., 2004, Margin Adequacy and Standards: An Analysis of the Crude Oil Futures Market. *Journal of Business*, 77, 101-135.

Duffie, D., 2013a, Replumbing Our Financial System: Uneven Progress. *International Journal of Central Banking*, 9, 251-250.

Duffie, D., 2013b, The Controlled Failure of Central Clearing Parties. Speech at the FEBS/ LabEx-ReFi Financial Regulation and Systemic Risk Conference, Paris, June 6, 2013.

Duffie, D., Li, A., and Lubke, T., 2010, Perspectives on OTC Derivatives Market Infrastructure. *Federal Reserve Bank of New York Staff Reports Policy No. 424*.

Duffie, D., Scheicher, M., and Vuilleme, G., 2014, Central Clearing and Collateral Demand. *Journal of Financial Economics*, forthcoming.

Duffie, D. and Zhu, H., 2011, Does a Central Clearing Counterparty Reduce Counterparty Risk? *Review of Asset Pricing Studies*, 1, 74-95.

Engle, R. F., 2002, Dynamic Conditional Correlation – A simple Class of Multivariate Generalized Autoregressive Conditional Heteroskedasticity Models. *Journal of Business and Economic Statistics*, 20, 339-350.

Figlewski, S., 1984, Margins and Market Integrity: Margin Setting for Stock Index Futures and Options. *Journal of Futures Markets*, 4, 385-414.

Fontaine, J.-S., Pérez Saiz, H., and Slive, J., 2013, Dealers' Competition and Control of a Central Counterparty: When Lower Risk Increases Profit. Working Paper, Bank of Canada.

Gârleanu, N. and Pedersen, L.H., 2011, Margin-based Asset Pricing and Deviations from the Law of One Price. *Review of Financial Studies*, 24, 1980-2022.

Gemmill, G., 1994, Margins and the Safety of Clearing Houses. *Journal of Banking and Finance*, 18, 979-996.

Genest, C., Ghoudi, K., and Rivest, L.-P., 1995, A Semiparametric Estimation Procedure of Dependence Parameters in Multivariate Families of Distributions. *Biometrika*, 82, 543-552.

Ghamami, S., 2014, Static Models of Central Counterparty Risk. Working Paper, Board of Governors of the Federal Reserve.

Girardi, G. and Ergun T., 2013, Systemic Risk Measurement: Multivariate GARCH Estimation of CoVaR, *Journal of Banking and Finance*, 37, 3169-3180.

Harris, J. H. and Stahel, C. W., 2011, Funding Constraints and Liquidity Contagion in U.S. Equity and Treasury Markets. Working Paper, US Securities and Exchange Commission.

Hedegaard, E., 2013, Causes and Consequences of Margin Levels in Futures Markets. Working Paper, Arizona State University.

- Hirshleifer, D., Subrahmanyam, A., and Titman, S., 1994, Security Analysis and Trading Patterns When Some Investors Receive Information Before Others. *Journal of Finance*, 49, 1665-1698.
- Horrace, W. C., 2005, Some Results on the Multivariate Truncated Normal Distribution. *Journal of Multivariate Analysis*, 94, 209-221.
- Hurlin, C. and Pérignon, C., 2012, Margin Backtesting. *Review of Futures Markets*, 20, 179-194.
- Jones, R. A. and Pérignon, C., 2013, Derivatives Clearing, Default Risk, and Insurance. *Journal of Risk and Insurance*, 80, 373-400.
- Jordan, J. V. and Morgan, G. E., 1990, Default Risk in Futures Markets: The Customer-Broker Relationship. *Journal of Finance*, 45, 909-933.
- Koepl, T., Monnet, C., and Temzelides, T., 2012, Optimal Clearing Arrangements for Financial Trades. *Journal of Financial Economics*, 103, 189–203.
- Knott, R. and Mills, A., 2002, Modelling Risk in Central Counterparty Clearing Houses: A Review. *Bank of England Financial Stability Review*, December, 162-174.
- Kupiec, P., 1994, The Performance of S&P 500 Futures Product Margins under the SPAN Margining System. *Journal of Futures Markets*, 14, 789-811.
- Longin, F. and Solnik, B., 2001, Extreme Correlation of International Equity Markets. *Journal of Finance*, 56, 649-676.
- Longstaff, F., 2004, The Flight-to-Liquidity Premium in U.S. Treasury Bond Prices. *Journal of Business*, 77, 511-526.
- Loon Y. C. and Zhong Z. K., 2014, The Impact of Central Clearing on Counterparty Risk, Liquidity, and Trading: Evidence from the Credit Default Swap Market, *Journal of Financial Economics*, 112, 91-115.
- Menkveld, A. J., 2013, Systemic Liquidation Risk: Centralized Clearing, Margins, and the Default Fund. Working Paper, VU University Amsterdam.
- Menkveld, A. J., 2014, Crowded Trades: An Overlooked Systemic Risk for Central Clearing Counterparties. Working Paper, VU University Amsterdam.
- Oh, D. H. and Patton, A. J., 2012, Modelling Dependence in High Dimensions with Factor Copulas. Working Paper, Duke University.
- Pirrong, C., 2011, The Economics of Clearing in Derivatives Markets: Netting, Asymmetric Information, and the Sharing of Default Risks through a Central Counterparty. Working Paper, University of Houston.
- Poon, S. H., Rockinger, M., and Tawn, J., 2004, Extreme Values Dependency in International Stock Markets: Diagnostics, Models, and Financial Implications. *Review of Financial Studies*, 17, 581-610.
- Slive, J., Witmer J., and Woodman E., 2012, Liquidity and Central Clearing: Evidence from the CDS Market. Working Paper, Bank of Canada.
- TMX Montreal Exchange, 2013a, BAX Three-Month Canadian Bankers' Acceptance Futures Descriptive Brochure, TMX Group.
- TMX Montreal Exchange, 2013b, Government of Canada Bond Futures and Options on Futures Reference Manual, TMX Group.
- TMX Montreal Exchange, 2013c, Index Derivatives Reference Manual, TMX Group.
- US Department of Treasury, 2009, Financial Regulatory Reform: A New Foundation. Washington D.C.

Table 1: Scenarios used in the SPAN system

Scenario	Underlying Asset Price Change	Volatility Change	Time to Expiration
1	0	+ volatility range	-1/252
2	0	- volatility range	-1/252
3	+1/3 x price range	+ volatility range	-1/252
4	+1/3 x price range	- volatility range	-1/252
5	-1/3 x price range	+ volatility range	-1/252
6	-1/3 x price range	- volatility range	-1/252
7	+2/3 x price range	+ volatility range	-1/252
8	+2/3 x price range	- volatility range	-1/252
9	-2/3 x price range	+ volatility range	-1/252
10	-2/3 x price range	- volatility range	-1/252
11	+3/3 x price range	+ volatility range	-1/252
12	+3/3 x price range	- volatility range	-1/252
13	-3/3 x price range	+ volatility range	-1/252
14	-3/3 x price range	- volatility range	-1/252
15	Positive extreme change	0	-1/252
16	Negative extreme change	0	-1/252

Note: The table shows the sixteen scenarios used to determine the contract family charge in the SPAN system. Price and volatility ranges usually cover 99% of the data points over a rolling historical estimation window. Positive and negative extreme changes are designed to assess the effect of deep out of the money options.

Table 2: Theoretical performance of VaR and CoMargin systems

Jointly Normally Distributed P&Ls					Jointly Student t Distributed P&Ls			
Unconditional		Conditional on One Exceedance			Unconditional		Conditional on One Exceedance	
Prob. of at least one Exceedance	Shortfall	Prob. of Additional Exceedances	Shortfall		Prob. of at least one Exceedance	Shortfall	Prob. of at least one Exceedance	Shortfall
$\rho = 0$					$v = 30, \rho = 0.4$			
VaR	0.185	0.084	0.076	0.451	0.177	0.094	0.123	0.531
CoMargin	0.185	0.084	0.076	0.451	0.115	0.056	0.074	0.485
BNVaR	0.185	0.084	0.076	0.451	0.108	0.052	0.088	0.485
$\rho = 0.4$					$v = 10, \rho = 0.4$			
VaR	0.179	0.084	0.109	0.466	0.171	0.119	0.151	0.695
CoMargin	0.138	0.060	0.069	0.433	0.081	0.053	0.090	0.650
BNVaR	0.129	0.055	0.083	0.430	0.077	0.051	0.104	0.658
$\rho = 0.8$					$v = 5, \rho = 0.4$			
VaR	0.165	0.084	0.193	0.505	0.164	0.175	0.191	1.068
CoMargin	0.110	0.048	0.062	0.432	0.051	0.060	0.129	1.171
BNVaR	0.077	0.033	0.144	0.428	0.049	0.059	0.141	1.193

Note: This table presents the theoretical performance of the VaR (equation 2), CoMargin (equation 7), and Budget-neutral VaR (BNVaR, equation 11) systems, assuming four clearing members whose P&Ls are jointly normally or Student t distributed. The left panel presents the case where P&Ls are jointly normally distributed, such that $V \sim N(0, \Sigma)$, $V =$

$(V_1, V_2, V_3, V_4)'$ and $\Sigma = \begin{pmatrix} 1 & \rho & 0 & 0 \\ \rho & 1 & 0 & 0 \\ 0 & 0 & 1 & 0 \\ 0 & 0 & 0 & 1 \end{pmatrix}$ and reports the results for different levels of the correlation parameter, ρ , that range from 0 to 0.8. The right panel shows the case when P&Ls

are Student t distributed with degrees of freedom v , $V \sim t_v(0, \Sigma)$. The variance-covariance structure, Σ , is the same as that considered under the normal distribution assumption, but in this case, we set $\rho=0.4$ and let the degrees of freedom decrease from 30 to 5.

Table 3: Description of the data used in the empirical analysis

Item	Number	Comments
Clearing members	48	There is entry and exit in the sample, so the number of clearing members varies over time.
Trading Days	2,066	The sample period is from January 2, 2003 to March 31, 2011.
Underlying Assets	3	The three underlying assets are: <ol style="list-style-type: none"> 1. Yield on the three-month Canadian bankers' acceptance. 2. Yield on the ten-year Government of Canada Bond Futures 3. Level of the S&P/TSX 60 Index
Three-Month Canadian Bankers' Acceptance Futures Contracts (BAX)	45	Delivery dates range from January 2003 to December 2013.
Ten-Year Government of Canada Bond Futures Contracts (CGB)	34	Delivery dates range from March 2003 to June 2011.
S&P/TSX 60 Index Standard Futures Contracts (SXF)	34	Delivery dates range from March 2003 to June 2011.
Total futures contracts	113	These represent all the futures contracts (i.e., all delivery dates) written on the three underlying assets during the sample period.
Active firm accounts	21	We report results only for this type of account.
Active client accounts	23	
Active omnibus accounts	16	

Note: The table presents an overview of the dataset used in the empirical analysis, which was obtained from the Canadian Derivatives Clearing Corporation. An account is considered to be active on a given day if it has an open interest (i.e., long or short position at the end of the trading day) in at least one underlying asset.

Table 4: Specifications of the contracts included in the empirical analysis

	S&P/TSX 60 Index Standard Futures (SXF)	Three-Month Canadian Bankers' Acceptance Futures (BAX)	Ten-Year Government of Canada Bond Futures (CGB)
Underlying Interest	The S&P/TSX 60 Index C\$200 times the S&P/TSX 60 index futures value	C\$1,000,000 nominal value of Canadian bankers' acceptance with a three- month maturity.	C\$100,000 nominal value of Government of Canada Bond with 6% notional coupon.
Expiration Months	March, June, September and December.	March, June, September and December plus two nearest non-quarterly months (serials).	March, June, September and December.
Price Quotation	Quoted in index points, expressed to two decimals.	Index : 100 minus the annualized yield of a three- month Canadian bankers' acceptance.	Par is on the basis of 100 points where 1 point equals C\$1,000.
Price Fluctuation	0.10 index points for outright positions. 0.01 index points for calendar spreads	0.005 = C\$12.50 per contract for the nearest three listed contract months, including serials. 0.01 = C\$25.00 per contract for all other contract months.	0.01 = C\$10
Price Limits	A trading halt will be invoked in conjunction with the triggering of "circuit breaker" in the underlying stocks.	None	None
Settlement	Cash settlement	Cash settlement	Physical delivery of eligible Government of Canada Bonds.
Trading Hours (EST)	Early session*: 6:00 a.m. to 9:15 a.m. Regular session: 9:30 a.m. to 4:15 p.m. * A trading range of -5% to +5% (based on previous day's settlement price) has been established only for this session.	Early session: 6:00 a.m. to 7:45 a.m. Regular session: 8:00 a.m. to 3:00 p.m. Extended session*: 3:09 p.m. to 4:00 p.m. * There is no extended session on the last trading day of the expiring contract month.	Early session: 6:00 a.m. to 8:05 a.m. Regular session: 8:20 a.m. to 3:00 p.m. Extended session*: 3:06 p.m. to 4:00 p.m. * There is no extended session on the last trading day of the expiring contract month.

Source: TMX Montreal Exchange (<http://www.m-x.ca>).

Table 5: Summary statistics of the contracts included in the empirical analysis

Variable	Average	Median	St.Dev.	Min	Max
Panel A: All Contracts					
Active contracts per day	19.81	20.00	0.9279	13.00	21.00
Trading days per contract	362.25	253.00	221.72	6.00	756.00
Panel B: BAX Contracts					
Active contracts per day	11.99	12.00	0.14	8.00	13.00
Trading days per contract	550.58	699.00	249.25	6.00	756.00
Open interest	137.81	131.32	49.21	48.35	310.97
Panel C: CGB Contracts					
Active contracts per day	3.93	4.00	0.49	1.00	5.00
Trading days per contract	238.91	253.00	42.73	55.00	255.00
Open interest	65.26	60.81	27.36	16.15	176.97
Panel D: SXF Contracts					
Active contracts per day	3.89	4.00	0.43	1.00	4.00
Trading days per contract	236.32	250.00	42.58	52.00	255.00
Open interest	55.28	55.09	14.01	24.40	98.49

Note: The table shows the summary statistics of the 113 futures contracts included in the empirical analysis. These contracts are divided according to their underlying assets as follows: Three-month Canadian Bankers' Acceptance (BAX), Ten-year Government of Canada Bond (CGB) and S&P/TSX 60 Index Standard (SXF). Over the sample period (January 2, 2003 to March 31, 2011), there were 45 different delivery dates available for BAX contracts and 34 delivery dates available for CGB and SXF contracts. Open interest values are reported in thousands.

Table 6: Clearing members included in the empirical analysis

Number	Name	Number	Name
1	Newedge Canada Inc.	25	Morgan Stanley Canada LTD.
2	RBC Dominion Securities Inc.	26	CFG Financial Group Inc.
3	Union Securities LTD.	27	MF Global Canada Co.
4	T.D. Securities Inc.	28	Haywood Securities Inc.
5	BMO Nesbitt Burns LTD.	29	Goldman Sachs Canada Inc.
6	Macquarie Private Wealth Inc.	30	Timber Hill Canada Co.
7	UBS Securities Canada Inc.	31	Credit Suisse Securities
8	Desjardins Securities Inc.	32	CIBC World Markets Inc.
9	Macquarie Capital Markets Inc.	33	NBCN Clearing Services Inc.
10	Name not reported	34	HSBC Securities (Canada) Inc.
11	Merrill Lynch Canada Inc.	35	Mackie Research Capital Corporation
12	Odlum Brown LTD.	36	Benson-Quinn GMS Inc.
13	Penson Financial Services Inc.	37	Scotia Capital Inc.
14	Dundee securities corporation	38	E*trade Canada Securities Corporation
15	Daex Commodities Inc.	39	Raymond Kames LTD.
16	Canaccord Capital Corporation	40	Lévesque Beaubien Geoffrion Inc.
17	Friedberg Mercantile Group LTD.	41	TD Waterhouse Canada Inc.
18	W.D. Latimer Co. LTD.	42	Citigroup Global Markets Canada Inc.
19	Canadian Imperial Bank of Commerce (CIBC)	43	National Bank of Canada
20	Jones, Gable & Co. LTD.	44	J.P. Morgan Securities Canada Inc.
21	Name not reported	45	Merrill Lynch Canada Inc.
22	Timber Hill Canada Company	46	Name not reported
23	Laurentian Bank Securities Inc.	47	Fidelity Clearing Canada ULC
24	Deutsche Bank Securities LTD.	48	Maple Securities Canada LTD.

Note: The table provides the full list of clearing members that had at least one active client, firm or omnibus account during the sample period (January 2, 2003 to March 31, 2011). An account is considered to be active on a given day if it has an open interest (i.e., long or short position at the end of the trading day) in at least one underlying asset. Notice that this list includes more clearing members than those currently affiliated with the Canadian Derivatives Clearing Corporation (CDCC) because some of them entered and exited the market during the sample period.

Table 7: Summary statistics of the firm accounts included in the empirical analysis

Variable	Average	Median	St.Dev.	Min	Max
Panel A: Full Sample period					
Active accounts per day	11.64	12.00	1.09	8.00	15.00
Active days for an account	1145.19	1420.00	911.72	3.00	2066.00
Daily P&L across clearing members	-60.92	-97.80	2659.44	-15014.20	17502.52
P&L over time	-37.83	0.43	160.57	-455.52	237.50
Panel B: Pre-Crisis period					
Active accounts per day	11.96	12.00	0.95	9.00	15.00
Active days for an account	858.00	1148.00	431.12	3.00	1148.00
Daily P&L across clearing members	-163.50	-156.15	2027.37	-6813.50	10381.36
P&L over time	-119.12	-0.78	225.46	-671.62	39.80
Panel C: Crisis period					
Active accounts per day	11.24	11.00	1.13	8.00	15.00
Active days for an account	516.05	684.00	418.29	3.00	918.00
Daily P&L across clearing members	65.18	-57.43	3280.36	-15014.20	17502.52
P&L over time	39.83	-0.60	135.28	-110.76	484.42

Note: The table presents the summary statistics of the 21 active firm accounts used in the empirical analysis. An account is considered to be active on a given day if it has an open interest (i.e., long or short position at the end of the trading day) in at least one underlying asset. The sample period is from January 2, 2003 to March 31, 2011. The pre-crisis period is from January 2, 2003 to July 31, 2007 and the crisis period is from August 1, 2007 to March 31, 2011. P&L values are reported in thousands of dollars and are estimated only for active firm accounts.

Table 8: Daily margin requirements under the SPAN, VaR and CoMargin systems

	Mean	Median	St.Dev.	Min	Max
Panel A: Aggregate Market (CCP level)					
SPAN	112.04	105.71	38.49	49.83	328.77
VaR	101.40	95.80	36.03	42.90	301.97
CoMargin	161.31	156.20	64.93	56.89	475.27
BNSPAN	161.31	156.20	64.93	56.88	475.27
BNVaR	161.31	156.20	64.93	56.88	475.27
Panel B: Per Clearing Member					
SPAN	9.76	9.16	3.54	3.83	29.86
VaR	8.83	8.26	3.28	3.30	27.45
CoMargin	14.14	13.41	6.08	4.38	43.01
BNSPAN	14.14	13.41	6.08	4.38	43.01
BNVaR	14.14	13.41	6.08	4.38	43.01
Panel C: Per Clearing Member (Pre-Crisis)					
SPAN	8.49	8.32	2.38	3.83	14.98
VaR	7.72	7.47	2.15	3.30	13.79
CoMargin	11.94	11.62	4.45	4.38	25.98
BNSPAN	11.94	11.62	4.45	4.38	25.98
BNVaR	11.94	11.62	4.45	4.38	25.98
Panel D: Per Clearing Member (Crisis)					
SPAN	11.36	10.85	4.07	4.88	29.86
VaR	10.21	9.51	3.87	4.46	27.45
CoMargin	16.89	16.21	6.69	5.64	43.01
BNSPAN	16.89	16.21	6.69	5.64	43.01
BNVaR	16.89	16.21	6.69	5.64	43.01

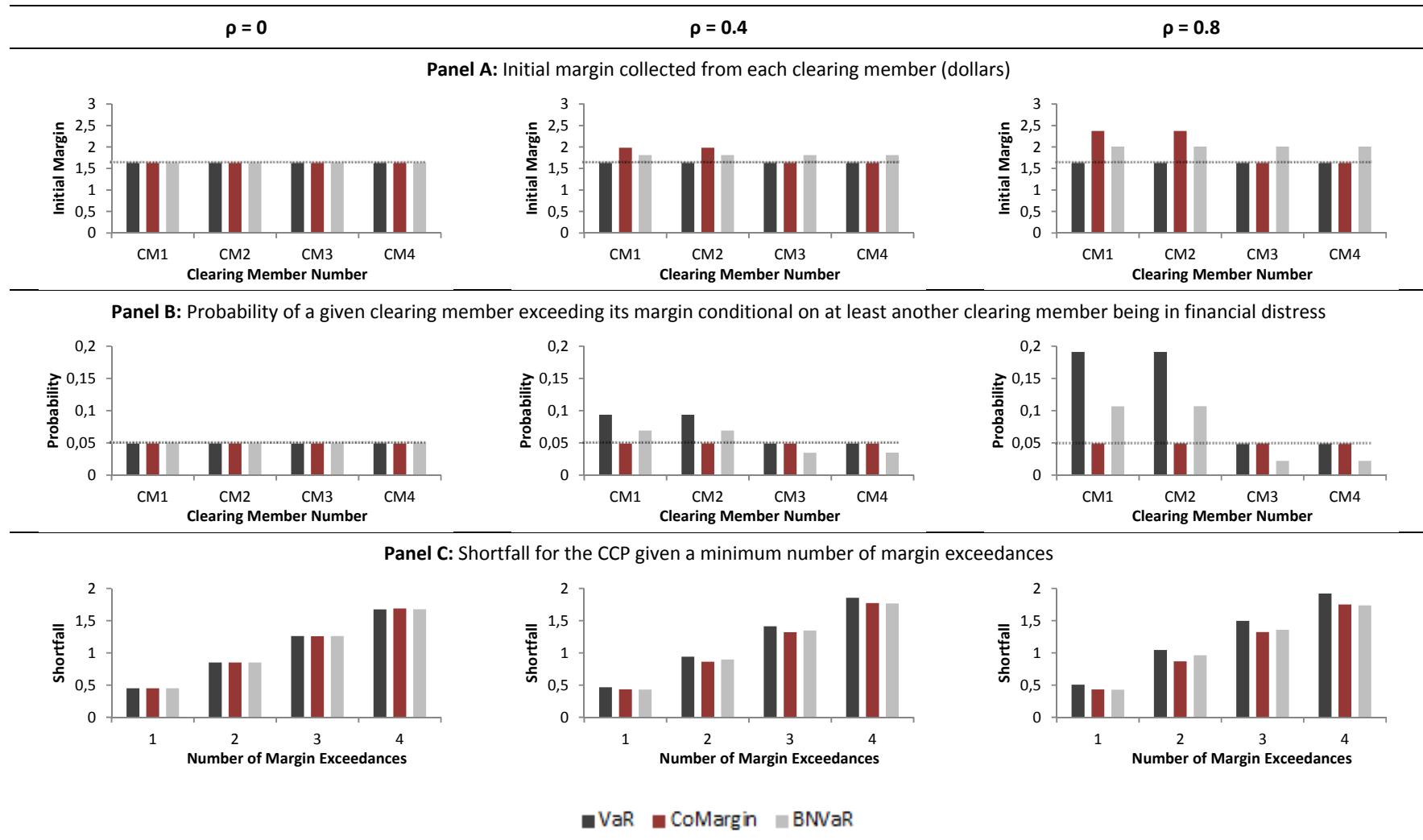
Note: The table presents the summary statistics of the daily margin requirements under the SPAN, VaR (equation 2) and CoMargin (equation 7) systems for the 21 active firm accounts during the full sample period, from January 2, 2003 to March 31, 2011 (Panels A and B), during the pre-crisis period, from January 2, 2003 to July 31, 2007 (Panel C), and during the crisis period, from August 1, 2007 to March 31, 2011 (Panel D). The budget-neutral versions of the SPAN (BNSPAN) and VaR (BNVaR) systems are also presented and were computed using equation 11. An account is considered to be active on a given day if it has an open interest (i.e., long or short position at the end of the trading day) in at least one underlying asset. Margin amounts are reported in millions of dollars.

Table 9: Performance of the SPAN, VaR and CoMargin systems

	Unconditional		Conditional on at least one exceedance	
	Frequency of Exceedances	Avg. Shortfall (CAD Millions)	Frequency of Exceedances	Avg. Shortfall (CAD Millions)
Panel A: Aggregate Market (CCP level)				
SPAN	0.09	0.35	0.36	3.78
VaR	0.14	0.44	0.42	3.20
CoMargin	0.07	0.13	0.28	1.85
BNSPAN	0.02	0.16	0.38	10.15
BNVaR	0.02	0.16	0.36	9.45
Panel B: Per Clearing Member				
SPAN	0.01	0.03	0.14	0.34
VaR	0.02	0.04	0.15	0.29
CoMargin	0.01	0.01	0.12	0.16
BNSPAN	0.00	0.01	0.12	0.90
BNVaR	0.00	0.01	0.12	0.84
Panel C: Per Clearing Member (Pre-Crisis)				
SPAN	0.01	0.01	0.11	0.08
VaR	0.02	0.01	0.13	0.09
CoMargin	0.01	0.00	0.10	0.05
BNSPAN	0.00	0.00	0.10	0.17
BNVaR	0.00	0.00	0.10	0.18
Panel D: Per Clearing Member (Crisis)				
SPAN	0.02	0.06	0.17	0.63
VaR	0.03	0.08	0.18	0.48
CoMargin	0.01	0.02	0.14	0.30
BNSPAN	0.00	0.03	0.14	1.40
BNVaR	0.00	0.03	0.14	1.21

Note: The table compares the empirical performance of the SPAN, VaR (equation 2) and CoMargin (equation 10) systems computed for the 21 active firm accounts over the sample period, from January 2, 2003 to March 31, 2011 (Panels A and B), during the pre-crisis period, from January 2, 2003 to July 31, 2007 (Panel C), and during the crisis period, from August 1, 2007 to March 31, 2011 (Panel D). The left panel reports unconditional amounts and the right panel reports the same amounts conditional on at least one margin exceedance. An exceedance is defined as a loss that exceeds the margin posted by a clearing member at the end of the previous trading day. The budget-neutral versions of the SPAN (BNSPAN) and VaR (BNVaR) systems are also presented and were computed using equation 11. An account is considered to be active on a given day if it has an open interest (i.e., long or short position at the end of the trading day) in at least one underlying asset. Average shortfall values are reported in millions of dollars and correspond to the losses expected if margin exceedances occur.

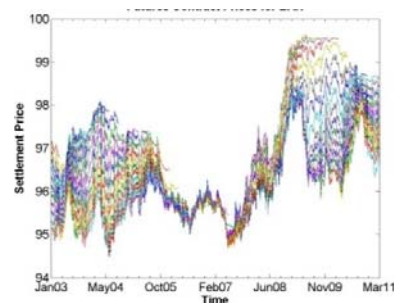
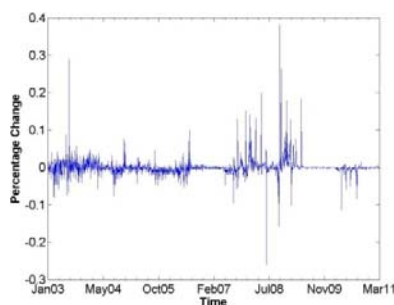
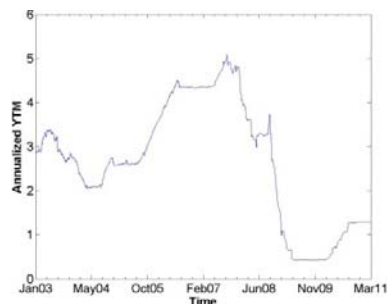
Figure 1: Theoretical performance of VaR and CoMargin systems assuming jointly normally distributed P&Ls



Note: This figure presents the theoretical performance of VaR margin (equation 2), CoMargin (equation 7), and BNVaR margin (equation 11). We consider four firms with jointly normally distributed P&Ls, such that $V \sim N(0, \Sigma)$, $V = (V_1, V_2, V_3, V_4)'$ and $\Sigma = \begin{pmatrix} 1 & \rho & 0 & 0 \\ \rho & 1 & 0 & 0 \\ 0 & 0 & 1 & 0 \\ 0 & 0 & 0 & 1 \end{pmatrix}$. We report our results for different levels of the correlation parameter, ρ , that range from 0 to 0.8.

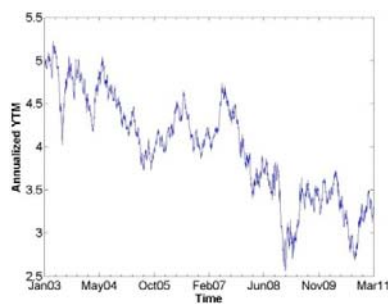
Figure 2: Underlying assets and futures contracts used in the empirical analysis

Three-month Canadian Bankers' Acceptance (BAX)

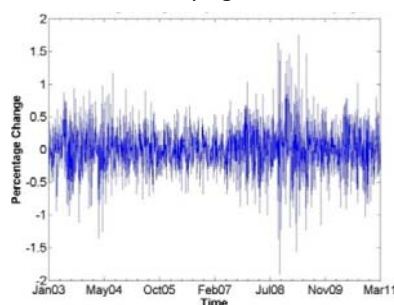


Ten-year Government of Canada Bond (CGB)

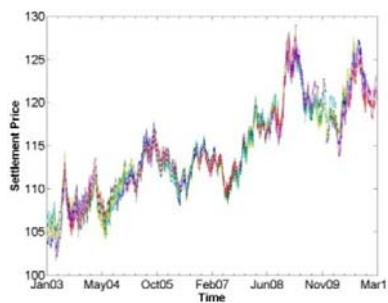
Panel A: Underlying Asset Prices



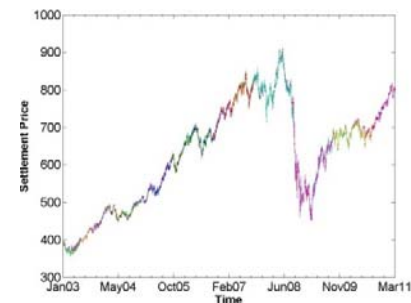
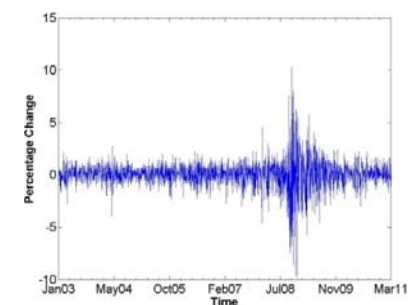
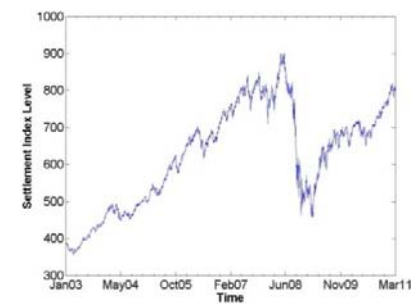
Panel B: Underlying Asset Returns



Panel C: Futures Prices (All Maturities)

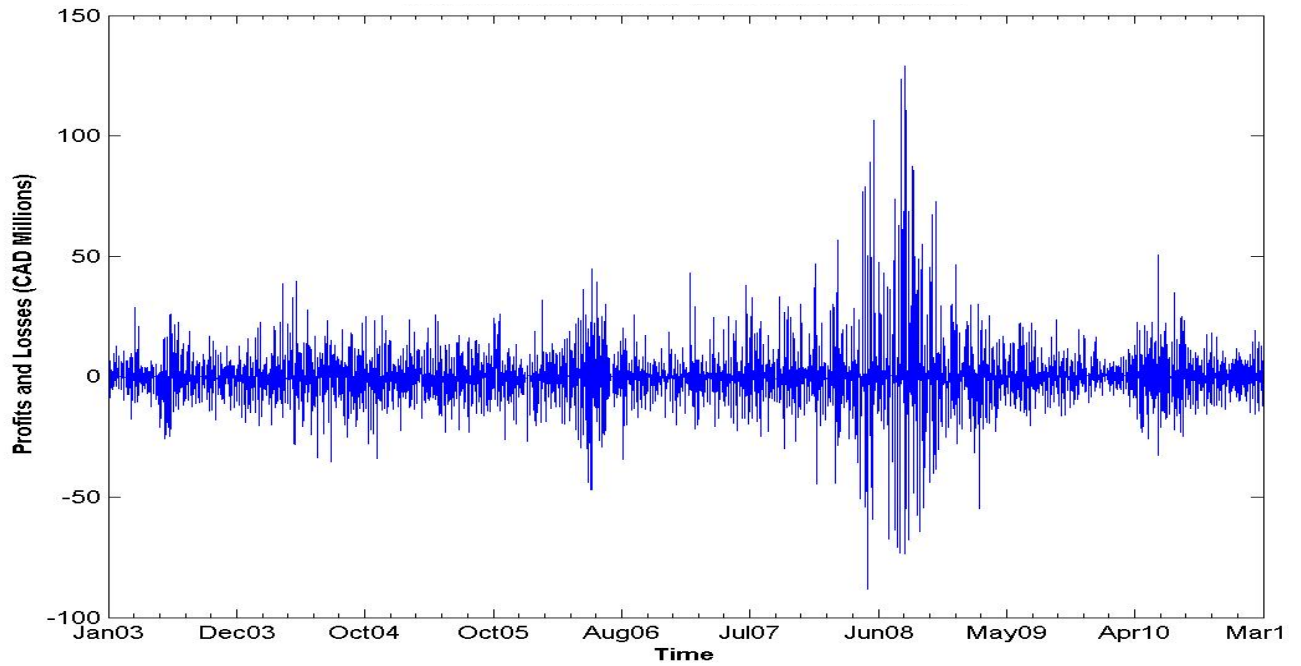


S&P/TSX 60 Index Standard (SXF)



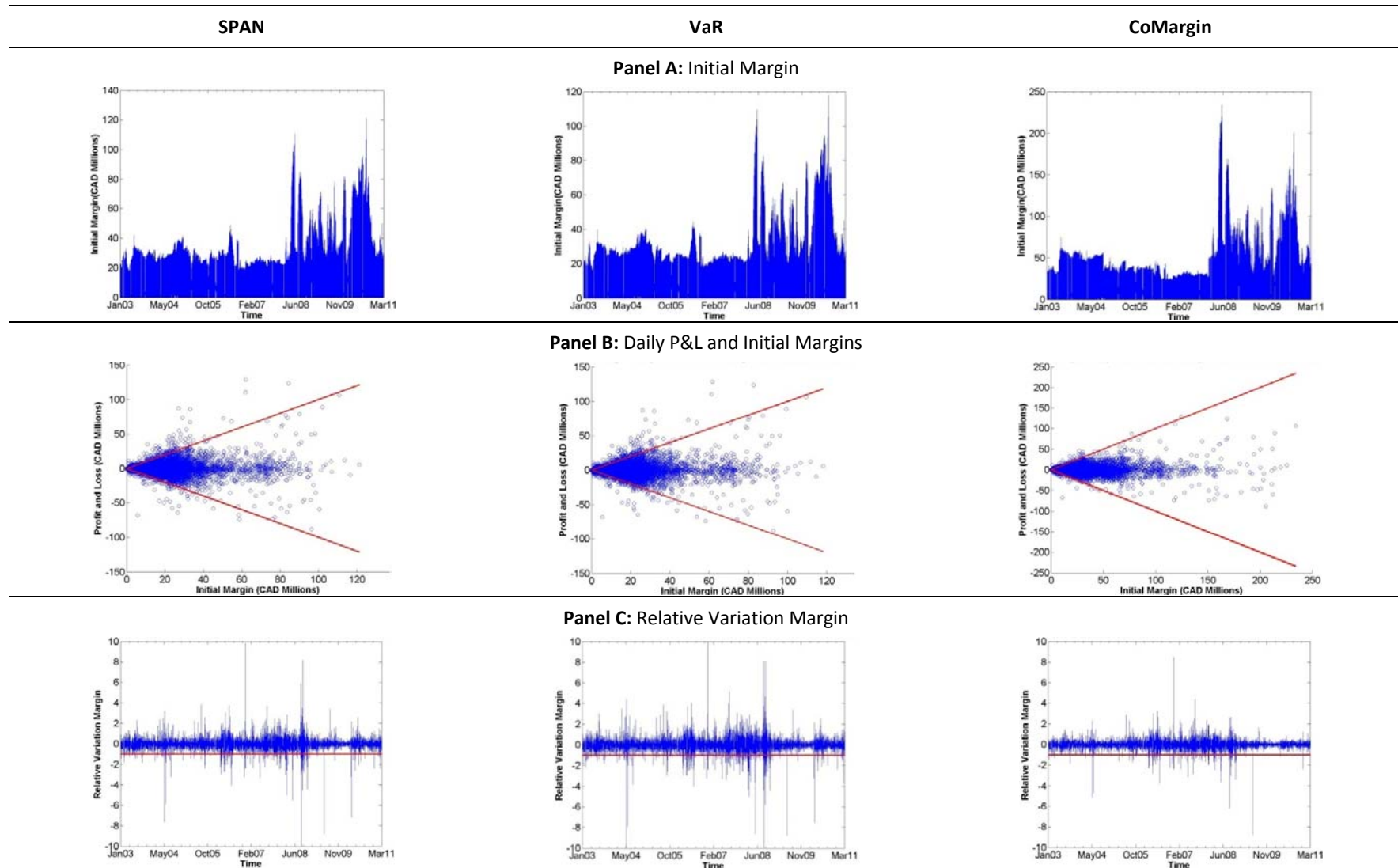
Note: Panel A presents the daily annualized settlement yield for the Three-month Canadian Bankers' Acceptance, the annualized yield on the Ten-year Government of Canada Bond and the settlement level of the S&P/TSX 60 Index. Panel B shows the daily returns (i.e., percentage changes) of the variables presented in Panel A. Panel C presents the daily settlement futures prices for the futures contracts (BAX, CGB, and SXF) written on the variables presented in Panel A and traded in the Montreal Exchange. Lines in different colours represent different delivery dates. The sample period is from January 2, 2003 to March 31, 2011. Source: Bloomberg.

Figure 3: P&L for active firm accounts



Note: The figure shows the daily stacked P&L implied from the positions of the 21 active firm accounts included in the sample; that is, accounts with an open interest (i.e., long or short position) in at least one underlying asset at the end of the trading day. For each date t , $n_t^a \in N$ observations are plotted, which correspond to the P&L of the n_t^a clearing members with an active account. The sample period is from January 2, 2003 to March 31, 2011.

Figure 4: SPAN, VaR and CoMargin collateral requirements over the full sample period



Note: The figure shows the implied margin requirements from the positions in the 21 active firm accounts under the SPAN, VaR and CoMargin systems. Panel A shows the daily stacked initial margin requirements. Panel B plots the daily implied P&L against its initial margin requirement. Panel C shows the daily stacked values of the relative variation margin, which is defined as the ratio of P&L to posted initial margin. The stacking method used in panels A and C is as follows: for each date t , $n_t^a \in N$ observations are plotted, which correspond to the observations of the n_t^a clearing members with an active account. The sample period is from January 2, 2003 to March 31, 2011.