

Aging and the Productivity Puzzle

Adam Ozimek, Senior Economist
Dante DeAntonio, Economist
Mark Zandi, Chief Economist

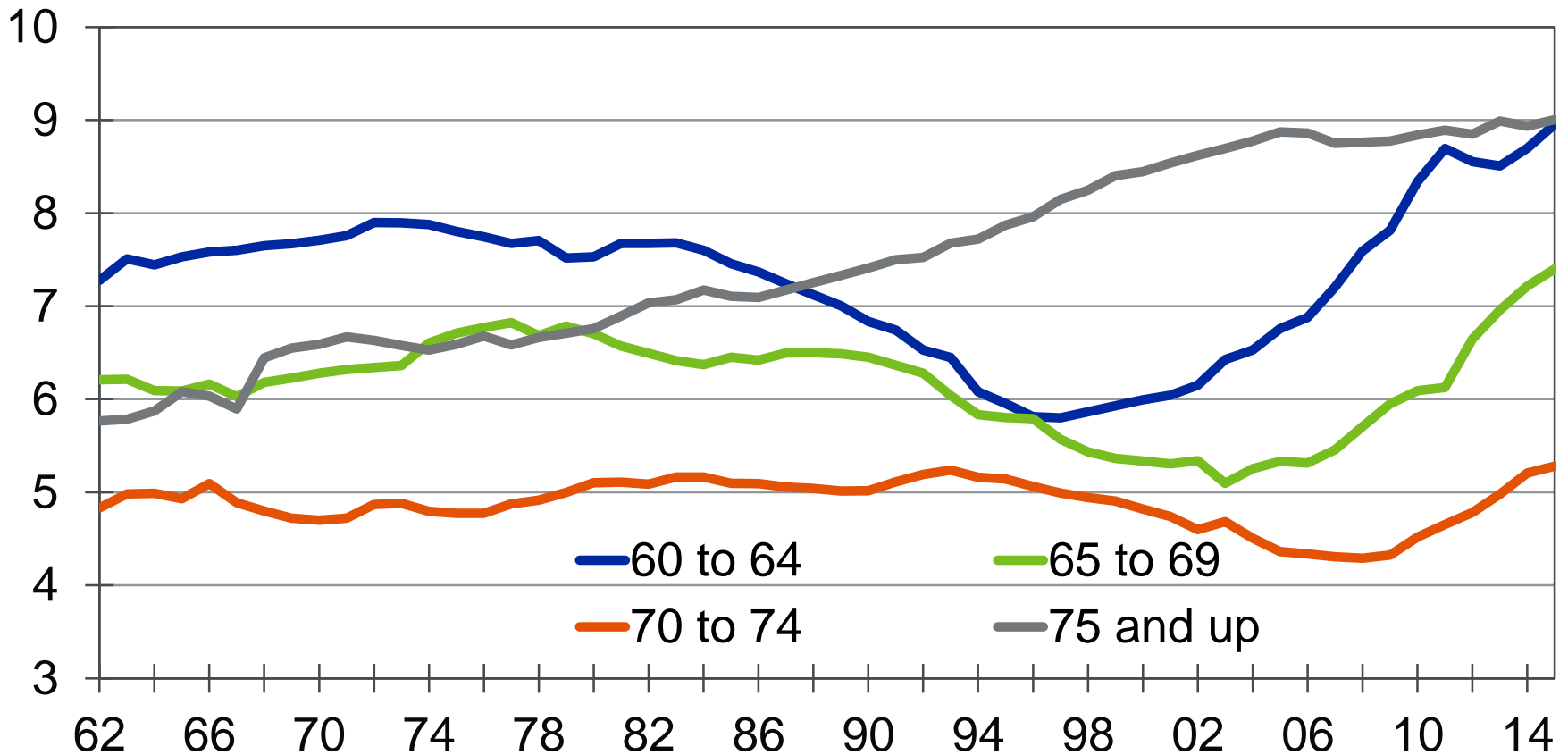
AEA Conference
January 2018

Introduction

- » The workforce has aged significantly over the last decade.
- » Two main factors:
 - Demographics
 - Older workers remaining in the workforce

The Adult Population Is Getting Older...

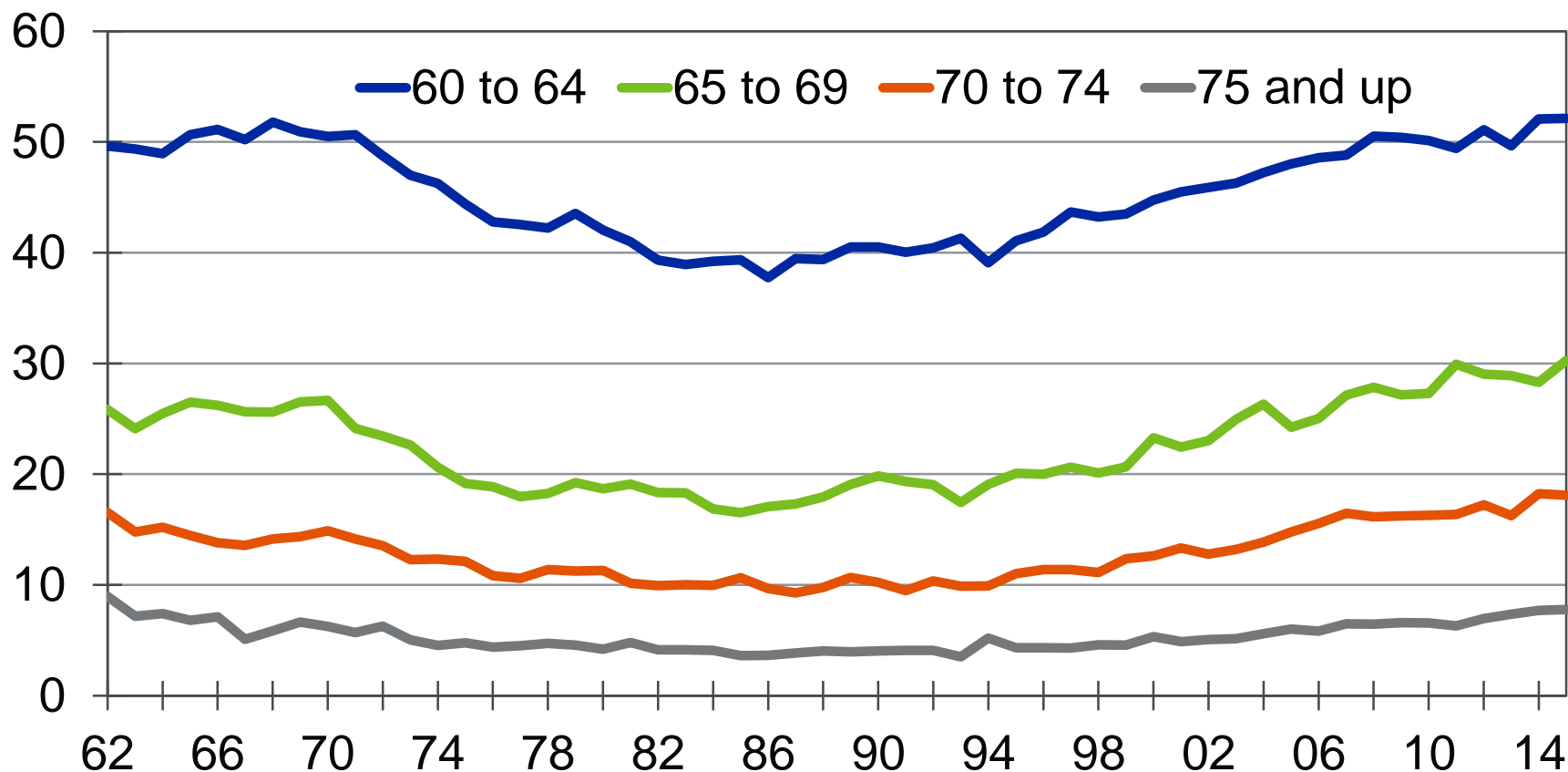
Share of the 25 and older population, by age, %



Sources: Census Bureau, Moody's Analytics

...And Working More...

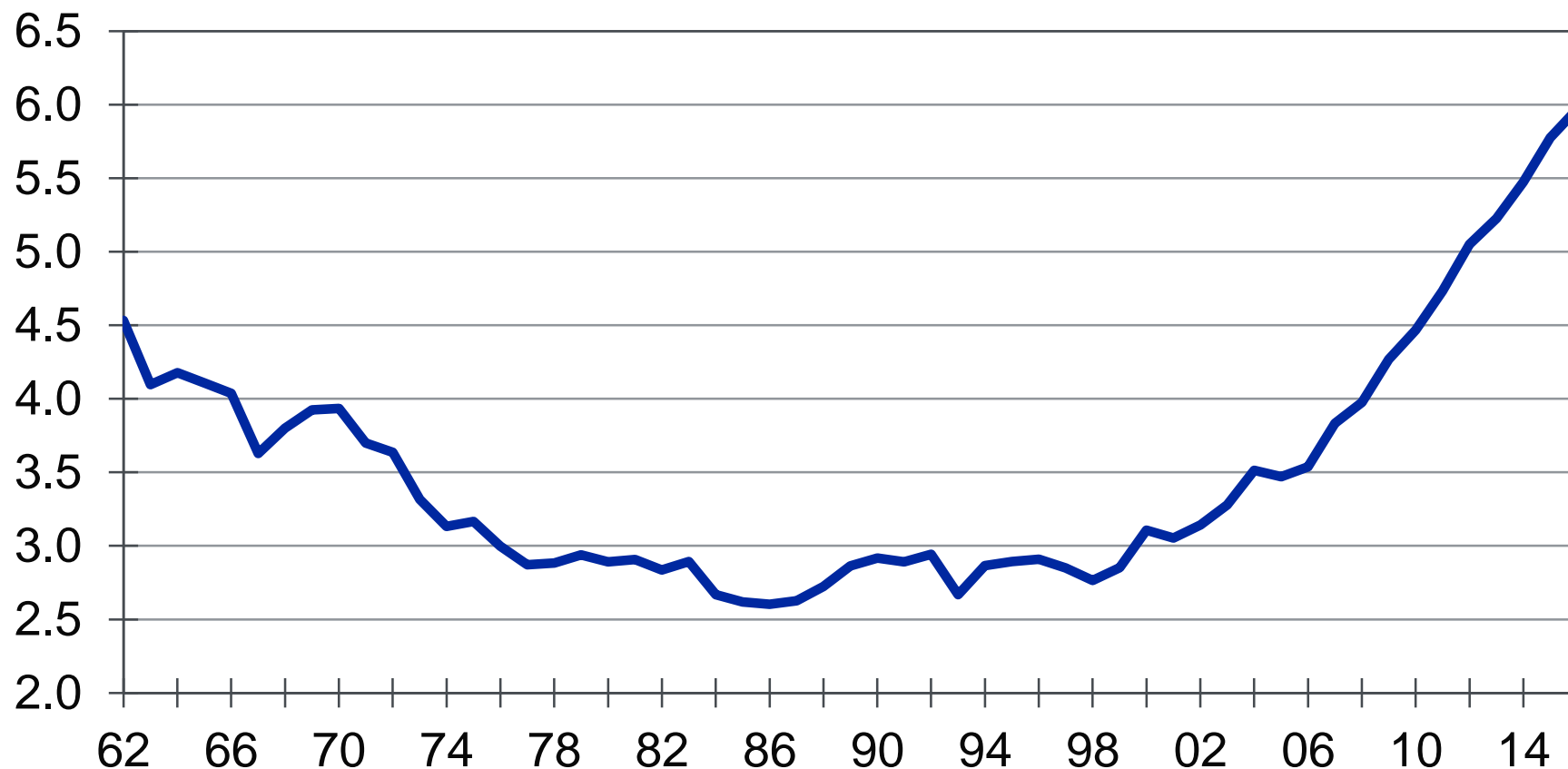
Employment-to-population ratio, by age, %



Sources: BLS, Moody's Analytics

...Leading to an Older Overall Workforce

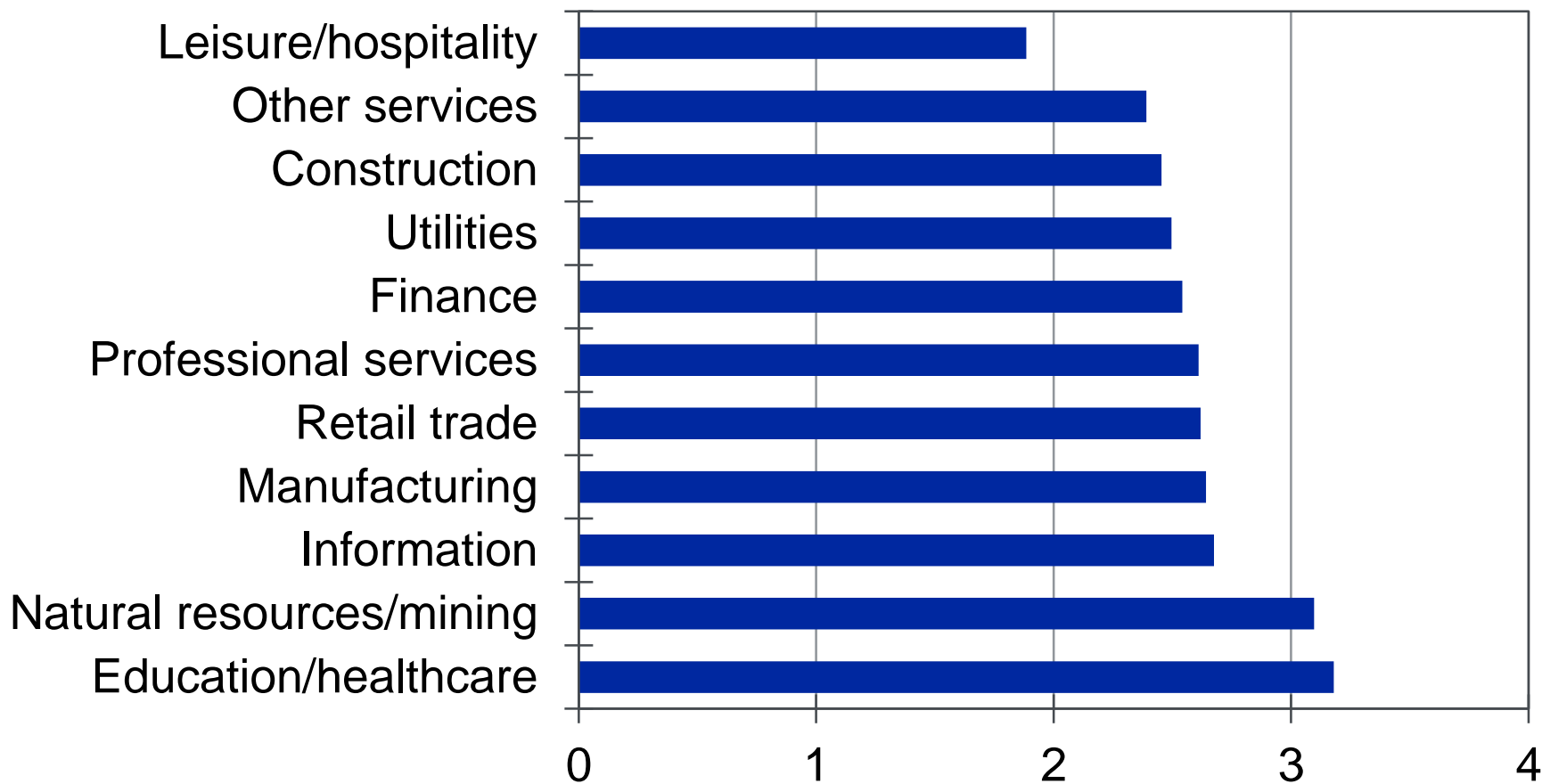
Share of employed age 65 and older, %



Sources: BLS, Moody's Analytics

Every Industry Has More Older Workers

Share of workforce age 65 and older, change 2000 to 2015, ppt



Sources: Census Bureau, Moody's Analytics

Aging and Productivity

- » Coincidental timing of aging workforce alongside declining productivity raises questions about whether aging has been partly responsible for the slowdown in productivity growth
- » A direct effect of aging on own productivity is not supported by lifecycle wage data, which does not show a drop off in wages for older workers
- » Possible spillovers?

Possible Productivity Spillovers

- » An older workforce may slow the adoption of productivity enhancing technologies that require learning
 - Benefits from such learning would be lowest for older workers, due to shorter remaining careers
 - Costs may also be higher for older workers if they have a harder time learning new skills

Existing Research Disagrees

- » Acemoglu and Restrepo (2017)
 - » Older population is associated with higher GDP per capita growth in cross-country growth regressions of 169 countries from 1990 to 2015.
 - » Labor scarcity leads to more robotics.
- » Maestas, Mullen, Powell (2016)
 - » 60+ population growth is associated with lower productivity in state panel model, 1980-2010.
 - » 0.3 pp lower GDP growth per year from 1980 to 2010, 1.2 pp lower from 2010 to 2020.

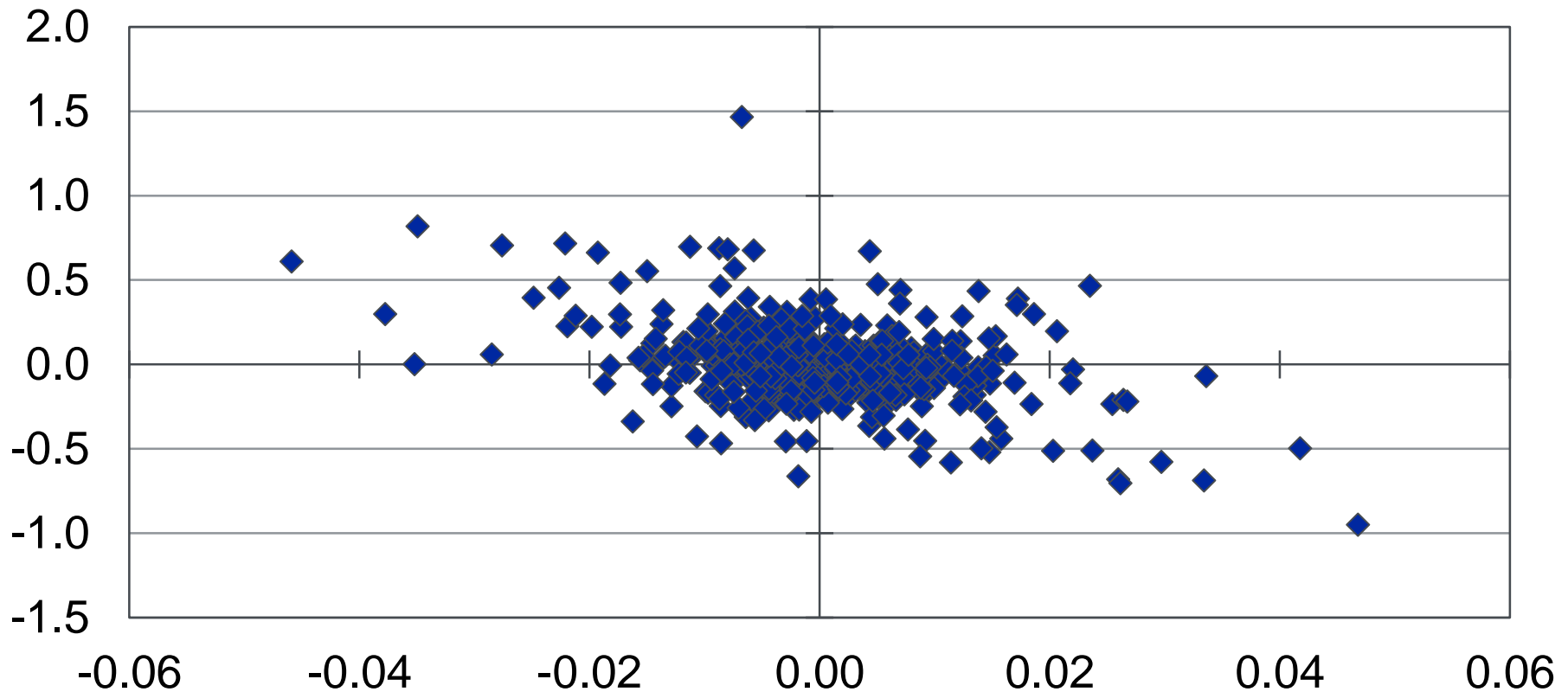
QWI Aggregate Analysis

- » A clear relationship is shown between aggregate aging and productivity in cross-sections of state-industry data
- » Annual state-industry QWI data is matched to BEA data on state-level productivity by industry
 - The matched data covers 50 states and D.C., along with 11 industry aggregations

Clear 2015 Cross-Sectional Relationship

X-axis: % of workers 65 and up minus state & industry fixed effect

Y-axis: Log productivity minus state & industry fixed effect



Sources: Census Bureau, BEA, Moody's Analytics

Regression Models Verify Relationship

Regressions of log(productivity) by state and industry

	2000	2005	2010	2015	Stacked differences	Stacked differences
Share 65 and up						
Coefficient	-10.191	-10.835	-10.273	-9.278	-4.051	-4.459
P-value	0.000	0.000	0.000	0.000	0.020	0.014
Sample size	462	549	560	549	1,560	1,560
Adjusted R-squared	0.946	0.938	0.940	0.938	0.363	0.371
Employment control?	N	N	N	N	N	Y

Notes: All models include state and industry fixed effects, standard errors clustered by state.

ADP Worker-Level Analysis

- » Individual-level data used to ensure compositional effects are not driving results
- » Analysis used ADP quarterly payroll records to estimate Mincer equations:

$$\ln(Y_{i,j,t}) = \alpha + \beta_1 X_{i,t} + \beta_2 \Pi_{j,t} + \beta_3 \theta_{j,t} + \mu_{j,t} + \varepsilon_{i,j,t}$$

- Y is the hourly wage for individual i , at firm j , in period t
- $X_{i,t}$ includes worker specific controls
- $\Pi_{j,t}$ includes firm specific controls
- $\theta_{j,t}$ measures the share of workers at firm j who are age 65 and older

Basic Model Results

	Ln(wage) 2016Q4	Dlog(wage) 2013Q4-2016Q4
65+ share of firm employment	-1.008*** (0.0365)	
Change in 65+ share of firm employment		-0.0857*** (0.0132)
Sample size	914,627	914,627
Adjusted R-squared	0.374	0.090

Notes: All models include controls by 3-digit ZIP code, firm industry classification, as well as worker characteristics. Standard errors clustered at the 3-digit ZIP code level in parentheses. Sample includes workers at firms with 20-499 employees. *** p<0.01, ** p<0.05, * p<0.1

Albatross vs. Wise Man Theories

- » The results of the initial model are consistent with two opposing theories:
 - Older works have negative productivity spillover effects, so having more of them brings down productivity (Albatross theory)
 - Older workers have positive spillover effects, and firms with more older workers have more retiring workers (Wise man theory)

Flow Model

- » To determine which theory is appropriate, it is useful to break the stock of older workers in period t into flows from period $t-1$ into period t as:

$$\theta_{j,t} = \theta_{j,t-1} + H_{j,t} + A_{j,t} - E_{j,t}$$

- $\theta_{j,t-1}$ is the number of older workers at firm j , in period $t-1$
- $H_{j,t}$ is the number of older workers hired at firm j , between period $t-1$ and period t
- $A_{j,t}$ is the number of workers who aged into the older working group and were employed at firm j in period t and period $t-1$
- $E_{j,t}$ is the number of older workers who were employed at firm j in period $t-1$ but exited prior to period t

Flow Model Results

	Dlog(wage) 2013Q4-2016Q4
65+ share in 2013Q4 ($\theta_{j,t-1}$)	-0.0674*** (0.0111)
65+ hires between 2014Q4 and 2016Q4 ($H_{j,t}$)	0.0242 (0.0190)
Workers aged into 65+ share ($A_{j,t}$)	-0.0856*** (0.0166)
65+ exits from firm between 2013Q4 and 2016Q4 ($E_{j,t}$)	0.0287*** (0.0111)
Sample size	1,412,164
Adjusted R-squared	0.601

Notes: All models include controls by 3-digit ZIP code, firm industry classification, as well as worker characteristics. Standard errors clustered at the 3-digit ZIP code level in parentheses. Sample includes workers at firms with 20-499 employees. *** $p < 0.01$, ** $p < 0.05$, * $p < 0.1$

Robustness Check

- » The initial models leave open the possibility that firms with higher shares of older workers experience some other negative shocks which influence wage levels/growth
- » A robustness check can be performed by focusing on variation in geographic labor markets within large national firms
- » Large firms are segmented into local labor markets using 3-digit ZIP codes of workers' home addresses

Robustness Check

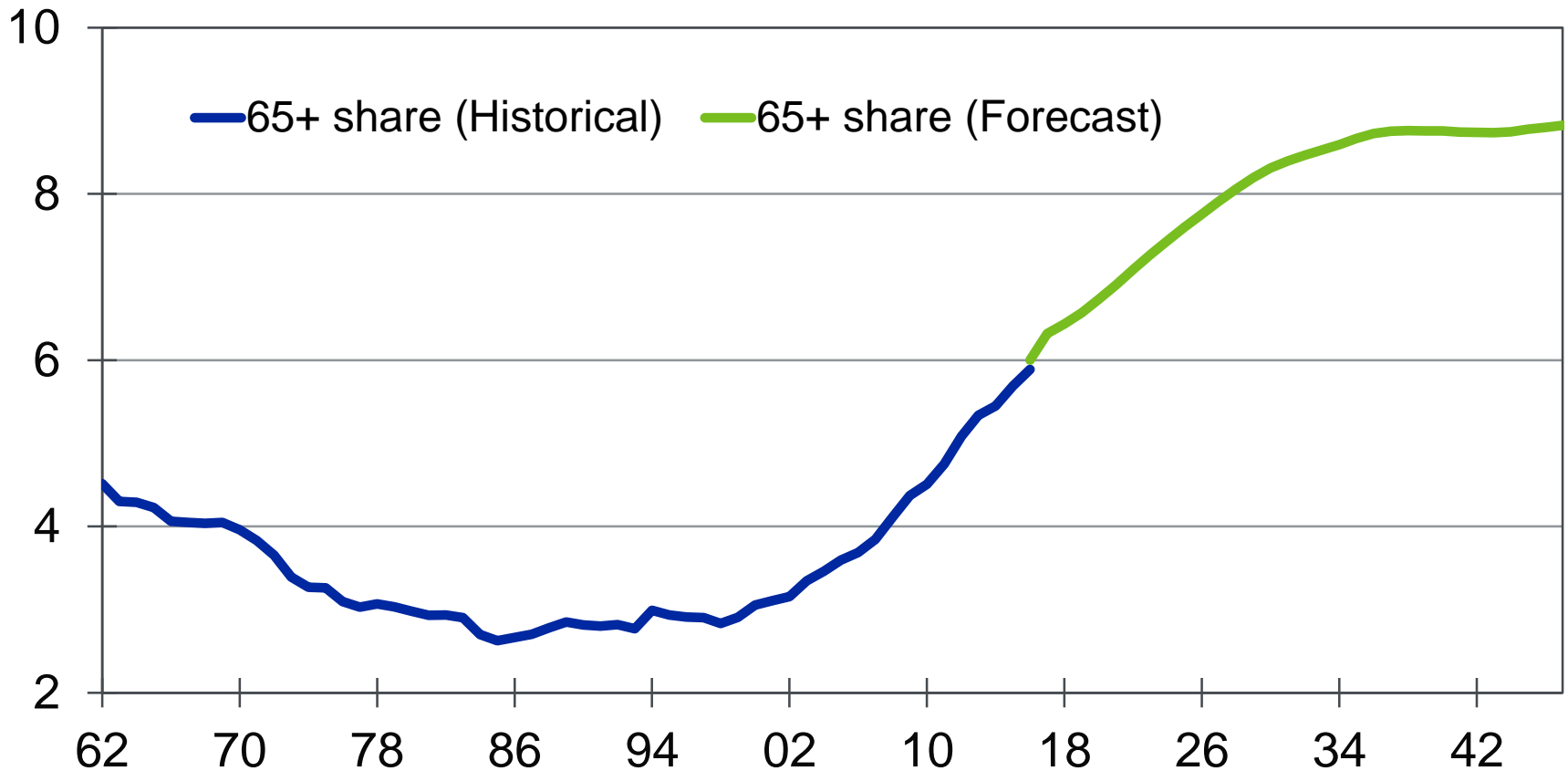
- » The sample is limited to firms with workers who live in 100 or more 3-digit ZIP codes, and the model includes firm-specific fixed effects, along with geographic fixed effects
 - This focuses the analysis only on within-firm, within 3-digit ZIP code wage variation

	Ln(wage) 2016Q4	Ln(wage) 2016Q4
65+ share of firm employment	-1.489*** (0.0999)	-0.626*** (0.0936)
Sample size	1,412,164	1,412,164
Adjusted R-squared	0.601	0.712
Firm-level fixed effects?	No	Yes

Notes: All models include controls by 3-digit ZIP code, firm industry classification, as well as worker characteristics. Standard errors clustered at the 3-digit ZIP code level in parentheses. Sample includes firms with workers in 100 or more 3-digit ZIP codes. *** $p < 0.01$, ** $p < 0.05$, * $p < 0.1$

Workforce Will Age Further...

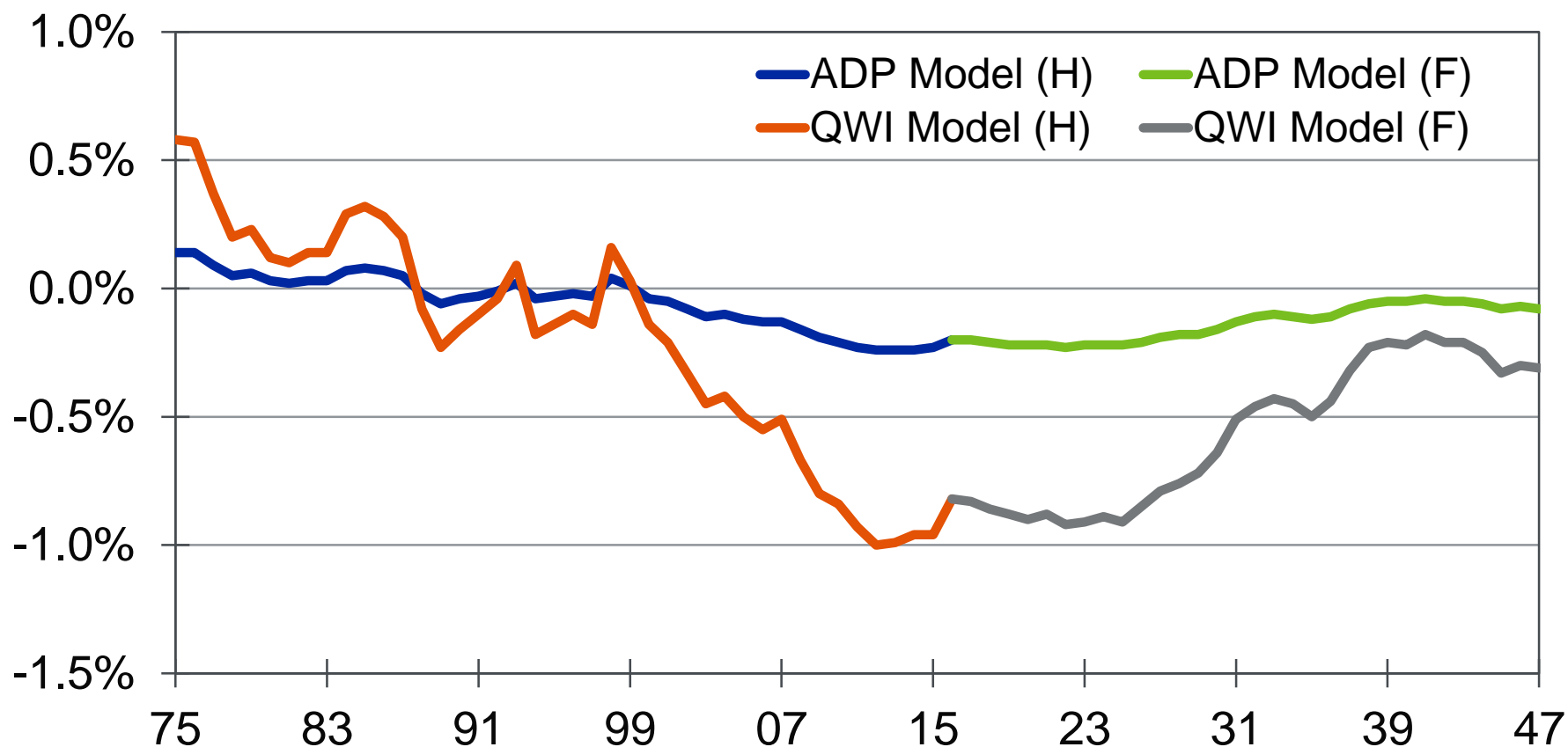
Share of employed age 65 and older, %



Sources: BLS, Moody's Analytics

...Leading to Productivity Losses

Reduction in productivity growth from aging workforce, ppt



Sources: BLS, Moody's Analytics

MOODY'S

ANALYTICS

United States
121 North Walnut Street
Suite 500
West Chester PA 19380
+1.610.235.5299

United Kingdom
One Canada Square
Canary Wharf
London E14 5FA
+44.20.7772.5454

Australia
Level 10
1 O'Connell Street
Sydney, NSW, 2000
Australia
+61.2.9270.8111

Prague
Washingtonova 17
110 00 Prague 1
Czech Republic
+420.22.422.2929

moodyanalytics.com

© 2017 Moody's Corporation, Moody's Investors Service, Inc., Moody's Analytics, Inc. and/or their licensors and affiliates (collectively, "MOODY'S"). All rights reserved.

CREDIT RATINGS ISSUED BY MOODY'S INVESTORS SERVICE, INC. AND ITS RATINGS AFFILIATES ("MIS") ARE MOODY'S CURRENT OPINIONS OF THE RELATIVE FUTURE CREDIT RISK OF ENTITIES, CREDIT COMMITMENTS, OR DEBT OR DEBT-LIKE SECURITIES, AND MOODY'S PUBLICATIONS MAY INCLUDE MOODY'S CURRENT OPINIONS OF THE RELATIVE FUTURE CREDIT RISK OF ENTITIES, CREDIT COMMITMENTS, OR DEBT OR DEBT-LIKE SECURITIES. MOODY'S DEFINES CREDIT RISK AS THE RISK THAT AN ENTITY MAY NOT MEET ITS CONTRACTUAL, FINANCIAL OBLIGATIONS AS THEY COME DUE AND ANY ESTIMATED FINANCIAL LOSS IN THE EVENT OF DEFAULT. CREDIT RATINGS DO NOT ADDRESS ANY OTHER RISK, INCLUDING BUT NOT LIMITED TO: LIQUIDITY RISK, MARKET VALUE RISK, OR PRICE VOLATILITY. CREDIT RATINGS AND MOODY'S OPINIONS INCLUDED IN MOODY'S PUBLICATIONS ARE NOT STATEMENTS OF CURRENT OR HISTORICAL FACT. MOODY'S PUBLICATIONS MAY ALSO INCLUDE QUANTITATIVE MODEL-BASED ESTIMATES OF CREDIT RISK AND RELATED OPINIONS OR COMMENTARY PUBLISHED BY MOODY'S ANALYTICS, INC. CREDIT RATINGS AND MOODY'S PUBLICATIONS DO NOT CONSTITUTE OR PROVIDE INVESTMENT OR FINANCIAL ADVICE, AND CREDIT RATINGS AND MOODY'S PUBLICATIONS ARE NOT AND DO NOT PROVIDE RECOMMENDATIONS TO PURCHASE, SELL, OR HOLD PARTICULAR SECURITIES. NEITHER CREDIT RATINGS NOR MOODY'S PUBLICATIONS COMMENT ON THE SUITABILITY OF AN INVESTMENT FOR ANY PARTICULAR INVESTOR. MOODY'S ISSUES ITS CREDIT RATINGS AND PUBLISHES MOODY'S PUBLICATIONS WITH THE EXPECTATION AND UNDERSTANDING THAT EACH INVESTOR WILL, WITH DUE CARE, MAKE ITS OWN STUDY AND EVALUATION OF EACH SECURITY THAT IS UNDER CONSIDERATION FOR PURCHASE, HOLDING, OR SALE.

MOODY'S CREDIT RATINGS AND MOODY'S PUBLICATIONS ARE NOT INTENDED FOR USE BY RETAIL INVESTORS AND IT WOULD BE RECKLESS AND INAPPROPRIATE FOR RETAIL INVESTORS TO USE MOODY'S CREDIT RATINGS OR MOODY'S PUBLICATIONS WHEN MAKING AN INVESTMENT DECISION. IF IN DOUBT YOU SHOULD CONTACT YOUR FINANCIAL OR OTHER PROFESSIONAL ADVISER.

ALL INFORMATION CONTAINED HEREIN IS PROTECTED BY LAW, INCLUDING BUT NOT LIMITED TO, COPYRIGHT LAW, AND NONE OF SUCH INFORMATION MAY BE COPIED OR OTHERWISE REPRODUCED, REPACKAGED, FURTHER TRANSMITTED, TRANSFERRED, DISSEMINATED, REDISTRIBUTED OR RESOLD, OR STORED FOR SUBSEQUENT USE FOR ANY SUCH PURPOSE, IN WHOLE OR IN PART, IN ANY FORM OR MANNER OR BY ANY MEANS WHATSOEVER, BY ANY PERSON WITHOUT MOODY'S PRIOR WRITTEN CONSENT.

All information contained herein is obtained by MOODY'S from sources believed by it to be accurate and reliable. Because of the possibility of human or mechanical error as well as other factors, however, all information contained herein is provided "AS IS" without warranty of any kind. MOODY'S adopts all necessary measures so that the information it uses in assigning a credit rating is of sufficient quality and from sources MOODY'S considers to be reliable including, when appropriate, independent third-party sources. However, MOODY'S is not an auditor and cannot in every instance independently verify or validate information received in the rating process or in preparing the Moody's publications.

To the extent permitted by law, MOODY'S and its directors, officers, employees, agents, representatives, licensors and suppliers disclaim liability for any person or entity for any indirect, special, consequential, or incidental losses or damages whatsoever arising from or in connection with the information contained herein or the use of or inability to use any such information, even if MOODY'S or any of its directors, officers, employees, agents, representatives, licensors or suppliers is advised in advance of the possibility of such losses or damages, including but not limited to: (a) any loss of present or prospective profits or (b) any loss or damage arising where the relevant financial instrument is not the subject of a particular credit rating assigned by MOODY'S.

To the extent permitted by law, MOODY'S and its directors, officers, employees, agents, representatives, licensors and suppliers disclaim liability for any direct or compensatory losses or damages caused to any person or entity, including but not limited to by any negligence (but excluding fraud, willful misconduct or any other type of liability that, for the avoidance of doubt, by law cannot be excluded) on the part of, or any contingency within or beyond the control of, MOODY'S or any of its directors, officers, employees, agents, representatives, licensors or suppliers, arising from or in connection with the information contained herein or the use of or inability to use any such information.

NO WARRANTY, EXPRESS OR IMPLIED, AS TO THE ACCURACY, TIMELINESS, COMPLETENESS, MERCHANTABILITY OR FITNESS FOR ANY PARTICULAR PURPOSE OF ANY SUCH RATING OR OTHER OPINION OR INFORMATION IS GIVEN OR MADE BY MOODY'S IN ANY FORM OR MANNER WHATSOEVER.

Moody's Investors Service, Inc., a wholly-owned credit rating agency subsidiary of Moody's Corporation ("MCO"), hereby discloses that most issuers of debt securities (including corporate and municipal bonds, debentures, notes and commercial paper) and preferred stock rated by Moody's Investors Service, Inc. have, prior to assignment of any rating, agreed to pay to Moody's Investors Service, Inc. for appraisal and rating services rendered by it fees ranging from \$1,500 to approximately \$2,500,000. MCO and MIS also maintain policies and procedures to address the independence of MIS's ratings and rating processes. Information regarding certain affiliations that may exist between directors of MCO and rated entities, and between entities who hold ratings from MIS and have also publicly reported to the SEC an ownership interest in MCO of more than 5%, is posted annually at www.moody's.com under the heading "Investor Relations — Corporate Governance — Director and Shareholder Affiliation Policy."

Additional terms for Australia only: Any publication into Australia of this document is pursuant to the Australian Financial Services License of MOODY'S affiliate, Moody's Investors Service Pty Limited ABN 61 003 399 657AFSL 336969 and/or Moody's Analytics Australia Pty Ltd ABN 94 105 136 972 AFSL 383569 (as applicable). This document is intended to be provided only to "wholesale clients" within the meaning of section 761G of the Corporations Act 2001. By continuing to access this document from within Australia, you represent to MOODY'S that you are, or are accessing the document as a representative of, a "wholesale client" and that neither you nor the entity you represent will directly or indirectly disseminate this document or its contents to "retail clients" within the meaning of section 761G of the Corporations Act 2001. MOODY'S credit rating is an opinion as to the creditworthiness of a debt obligation of the issuer, not on the equity securities of the issuer or any form of security that is available to retail investors. It would be reckless and inappropriate for retail investors to use MOODY'S credit ratings or publications when making an investment decision. If in doubt you should contact your financial or other professional adviser.

Additional terms for Japan only: Moody's Japan K.K. ("MJKK") is a wholly-owned credit rating agency subsidiary of Moody's Group Japan G.K., which is wholly-owned by Moody's Overseas Holdings Inc., a wholly-owned subsidiary of MCO. Moody's SF Japan K.K. ("MSFJ") is a wholly-owned credit rating agency subsidiary of MJKK. MSFJ is not a Nationally Recognized Statistical Rating Organization ("NRSRO"). Therefore, credit ratings assigned by MSFJ are Non-NRSRO Credit Ratings. Non-NRSRO Credit Ratings are assigned by an entity that is not a NRSRO and, consequently, the rated obligation will not qualify for certain types of treatment under U.S. laws. MJKK and MSFJ are credit rating agencies registered with the Japan Financial Services Agency and their registration numbers are FSA Commissioner (Ratings) No. 2 and 3 respectively.

MJKK or MSFJ (as applicable) hereby disclose that most issuers of debt securities (including corporate and municipal bonds, debentures, notes and commercial paper) and preferred stock rated by MJKK or MSFJ (as applicable) have, prior to assignment of any rating, agreed to pay to MJKK or MSFJ (as applicable) for appraisal and rating services rendered by it fees ranging from JPY200,000 to approximately JPY350,000,000.

MJKK and MSFJ also maintain policies and procedures to address Japanese regulatory requirements.